

INKO21

+34 972 66 48 36

info@inko21.com

inko21.com

257

Lifting system with swivel booms

for containers with ISO corners, up to max. 8 t total weight



With swivel booms, the supports are folded into transport or working position.
For front installation, a distance of at ca. 600 mm is required between the driver's cab and the container.

- Simple installation on the ISO corners
- Installation universally adjustable for either front or longitudinal locking
- Versions for different container dimensions
- Manual operation with hand crank - optionally with a connecting shaft.
- Optionally with electric motors and automatic levelling control (0° or ground parallel)
- Lifting height up to max. 2.000 mm (under reduced conditions)

257

Lifting system with swivel booms for containers with ISO corners, up to max. 8 t total weight

Model	257-T01
Maximum load capacity in the system	up to 8.000 kg
Maximum load capacity per support	up to 4.000 kg
Lifting height	1.750 mm - standard
Maximum lifting height (under reduced conditions)	up to 2.000 mm
Allowed ground inclination	3,5° - standard
Control tolerance for level control	±0,25° absolute
Wind load	20 m/s (72 km/h) - standard
Operating temperature range	-32°C - +49°C - standard
Power connection for electric drive	24 VDC 400 VAC 230 VAC



257

Lifting system with pull-out booms

for containers with ISO corners, up to max. 8 t total weight



With the pull-out booms, the supports are slid into the transport or working position. A distance of at least 250 mm is required between the driver's cab and the container. Also available as a mixed set (front with pull-out booms, rear with swivel booms)

- Installation on the ISO corners
- Versions for different container dimensions
- Manual operation with hand crank - optionally with a connecting shaft.
- Optionally with electric motors and automatic levelling control (0° or ground parallel)
- Lifting height up to max. 2.000 mm (under reduced conditions)

257

Lifting system with pull-out booms

for containers with ISO corners, up to max. 8 t total weight

Model	257-T02
Maximum load capacity in the system	up to 8.000 kg
Maximum load capacity per support	up to 4.000 kg
Lifting height	1.750 mm - standard
Maximum lifting height (under reduced conditions)	up to 2.000 mm
Allowed ground inclination	3,5° - standard
Control tolerance for level control	±0,25° absolute
Wind load	20 m/s (72 km/h) - standard
Operating temperature range	-32°C - +49°C - standard
Power connection for electric drive	24 VDC 400 VAC 230 VAC



260

Lifting system with swivel booms

for containers with ISO corners, up to max. 15 t total weight



With swivel booms, the supports are folded into transport or working position.
For front installation, a distance of at ca. 600 mm is required between the driver's cab and the container.

- Simple installation on the ISO corners
- Installation universally adjustable for either front or longitudinal locking
- Versions for different container dimensions
- Manual operation with hand crank - optionally with a connecting shaft.
- Optionally with electric motors and automatic levelling control (0° or ground parallel)
- Lifting height up to max. 2.000 mm (under reduced conditions)
- Ground inclination up to 7° possible (under reduced conditions)

260

Lifting system with swivel booms

for containers with ISO corners, up to max. 15 t total weight

Model	260-T01
Maximum load capacity in the system	up to 15.000 kg
Maximum load capacity per support	up to 7.500 kg
Lifting height	1.750 mm - standard
Maximum lifting height (under reduced conditions)	up to 2.000 mm
Allowed ground inclination	3,5° - standard
Maximum ground inclination (under reduced conditions)	up to 7,0°
Control tolerance for level control	±0,25° absolute
Wind load	20 m/s (72 km/h) - standard
Operating temperature range	-32°C - +49°C - standard
Power connection for electric drive	24 VDC 400 VAC 230 VAC



260

Lifting system with pull-out booms for containers with ISO corners, up to max. 15 t total weight



With the pull-out booms, the supports are slid into the transport or working position.
A distance of at least 250 mm is required between the driver's cab and the container.
Also available as a mixed set (front with pull-out booms, rear with swivel booms)

- Installation on the ISO corners
- Versions for different container dimensions
- Manual operation with hand crank - optionally with a connecting shaft.
- Optionally with electric motors and automatic levelling control (0° or ground parallel)
- Lifting height up to max. 2.000 mm (under reduced conditions)
- Ground inclination up to 7° possible (under reduced conditions)

260

Lifting system with pull-out booms for containers with ISO corners, up to max. 15 t total weight

Model	260-T02
Maximum load capacity in the system	up to 15.000 kg
Maximum load capacity per support	up to 7.500 kg
Lifting height	1.750 mm - standard
Maximum lifting height (under reduced conditions)	up to 2.000 mm
Allowed ground inclination	3,5° - standard
Control tolerance for level control	±0,25° absolute
Wind load	20 m/s (72 km/h) - standard
Operating temperature range	-32°C - +49°C - standard
Power connection for electric drive	24 VDC 400 VAC 230 VAC



273

Lifting system for radar containers

with increased mechanical stiffness, up to max. 7 t total weight



Container lifting system type for 273 radar shelter. Special mechanical solutions enable high rotational and translational stiffness which is necessary for the proper operation of the 3D radar. Terrain inclination up to 7 ° are possible with a lift height of 1.85 m. The lifting system is equipped with automatic position control and a CAN bus interface for integration into the Shelter control console.

- Installation at the ISO corners as well as by using a special adaption, screwed in plate.
- Pull-out and swivelling booms, mixed set.
- Additional lateral diagonal braces for increased stiffness.
- Drive with electric motors and automatic levelling control (0° or ground parallel).
- CAN bus interface for integration into the shelter control console.
- Ground inclination up to 7 ° are possible with a lift height of 1.850 mm.

273

Lifting system for radar containers

with increased mechanical stiffness, up to max. 7 t total weight

Model	273-T01
Maximum load capacity in the system	up to 7.000 kg
Maximum load capacity per support	up to 3.500 kg
Lifting height	1.750 mm - standard
Maximum lifting height (under reduced conditions)	up to 1.850 mm
Allowed ground inclination	3,5° - standard
Maximum ground inclination (under reduced conditions)	up to 7,0°
Control tolerance for level control	±0,25° absolute
Wind load	20 m/s (72 km/h) - standard
Operating temperature range	-32°C - +49°C - standard
Power connection for electric drive	24 VDC 400 VAC 230 VAC



296

Lifting system

for armoured functional module, up to max. 6,5 t total weight



Modular depositing system with 24 VDC electric drive, without automatic position control, with plug-in tubes as interface toward the module and diagonal braces for stiffness.

- Installation at the module by means of the plug-in booms.
- Additional diagonal braces to the module frame.
- Drive via ball screw, low maintenance.
- Electric drive (without automatic inclination control).
- Foot plates with cross mechanism for fine adjustment.
- Transport pallet to stow the complete system

296

Lifting system

for armoured functional module, up to max. 6,5 t total weight

Model	296-T01
Maximum load capacity in the system	up to 6.500 kg
Maximum load capacity per support	up to 3.250 kg
Lifting height	1.350 mm - standard
Allowed ground inclination	2,0° - standard
Control tolerance for level control	±0,25° absolute
Wind load	20 m/s (72 km/h) - standard
Operating temperature range	-32°C - +49°C - standard
Power connection for electric drive	24 VDC, manual emergency drive



504

Lifting system

for light containers with ISO corners, up to max. 3.6 t total weight



A simple and affordable lifting system with manual drive.
Ideal for light containers up to max. 3.6 t total weight.
Can be installed on the front or longitudinal.
Manual drive, with hand cranks and connecting shaft.

- Simple installation on the ISO corners
- Stowing on the container during transport
- Drive via trapezoidal spindle, low-maintenance
- Paired drive with 2x hand crank and 2x connecting shaft

504

Lifting system

for light containers with ISO corners, up to max. 3.6 t total weight

Model	504-T01
Maximum load capacity in the system	3.600 kg
Maximum load capacity per support	1.800 kg
Lifting height	1.250 mm - standard
Allowed ground inclination	2,0° - standard
Wind load	20 m/s (72 km/h) - standard
Operating temperature range	-32°C - +49°C - standard



238

Levelling support

for containers with ISO corners, up to max. 10 t total weight



The series provides simple, solid spindle supports with manual drive for leveling containers or structures near ground with ISO corners interface.

- Simple installation on the ISO corners.
- Manual drive based on trapezoidal thread spindle.
- Open spindle.
- Direct spindle drive via a key or hand ratchet.
- Foot plate permanently attached.

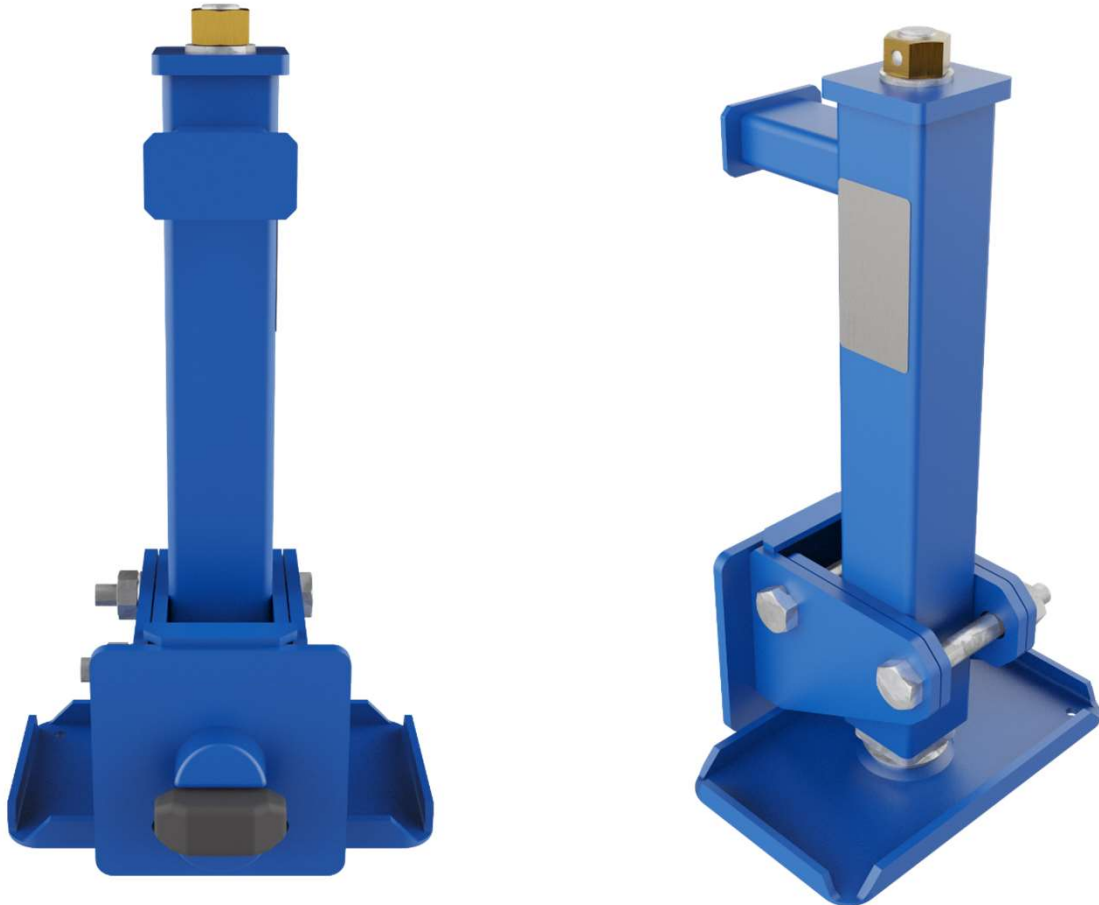
NATO-Stock-Number: 3950-12-390-2480

Model	238-T01	238-T02	238-T03
Maximum load capacity in the system	9.000 kg	2.000 kg	10.000 kg
Maximum load capacity per support	4.500 kg	1.000 kg	5.000 kg
Lifting height	200 mm	400 mm	200 mm
Allowed ground inclination	4,0°	2,0°	2,0°
Wind load	20 m/s (72 km/h)	20 m/s (72 km/h)	20 m/s (72 km/h)
Operating temperature range	-32°C - +49°C	-32°C - +49°C	-32°C - +49°C

245

Levelling support

for containers with ISO corners, up to max. 11 t total weight



Levelling supports for levelling or stabilizing a container or container-like module.
The upper outrigger leans against the contact surface of the container (smooth sheet or angle).

- Simple installation on the ISO corners.
- Manual drive based on trapezoidal thread spindle.
- Direct spindle drive via a key or hand ratchet.
- Foot plate permanently attached.
- Optional prop adapter for lateral stiffening.

245

Levelling support

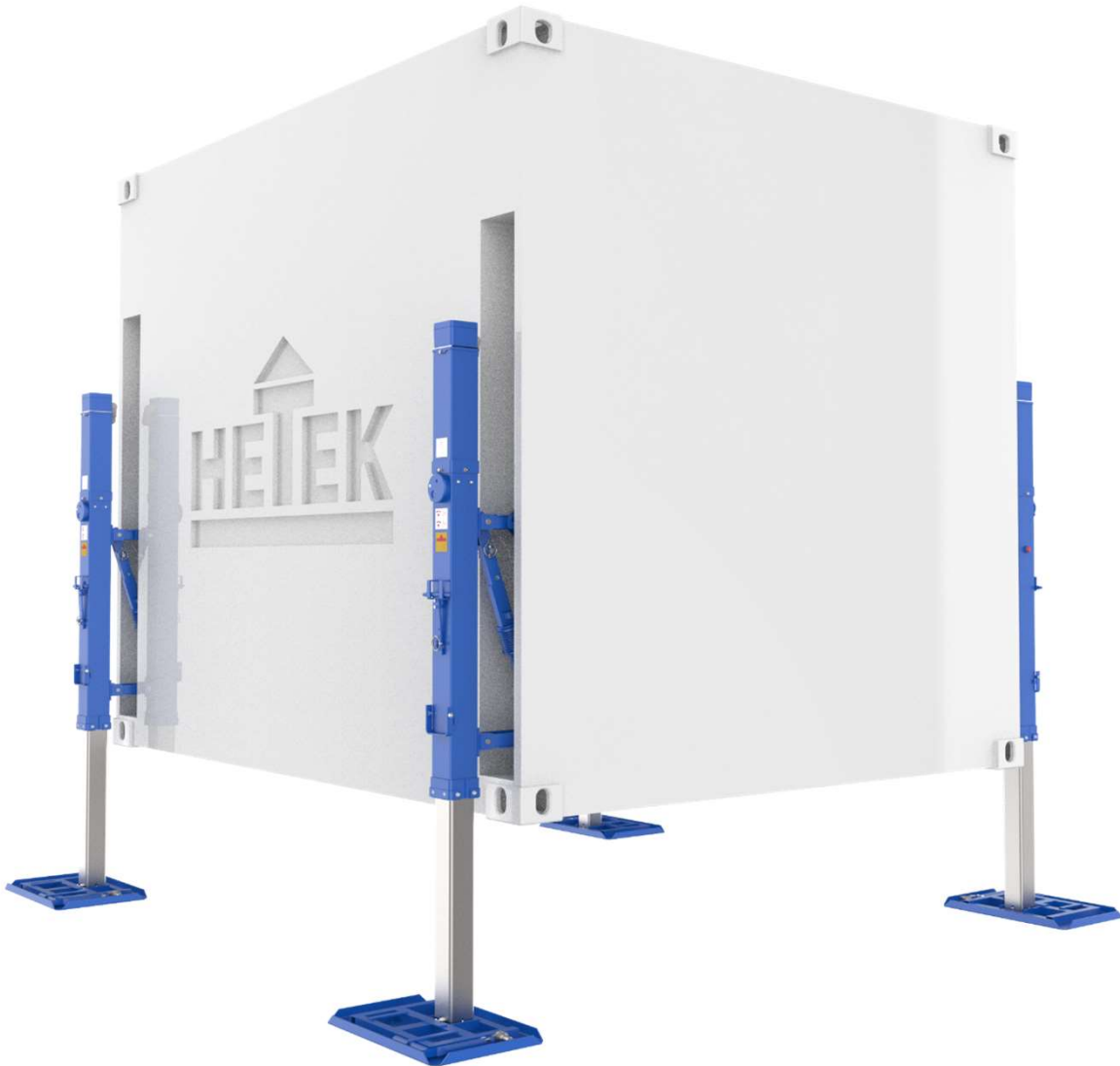
for containers with ISO corners, up to max. 11 t total weight

Model	245-T01	245-T02	245-T03
Maximum load capacity in the system	11.000 kg	8.000 kg	6.000 kg
Maximum load capacity per support	5.500 kg	4.000 kg	3.000 kg
Lifting height	200 mm	300 mm	400 mm
Overall height	460 mm	575 mm	680 mm
Weight per support	22 kg	16 kg	17 kg
Allowed ground inclination	3,0°	3,0°	3,0°
Wind load	20 m/s (72 km/h)	20 m/s (72 km/h)	20 m/s (72 km/h)
Operating temperature range	-32°C - +49°C	-32°C - +49°C	-32°C - +49°C



239

Levelling supports with electric drive for containers up to max. 9 t total weight



The Levelling support 239 is folded for transport into the niche, so that the container outside dimensions are not exceeded and transport costs optimized.

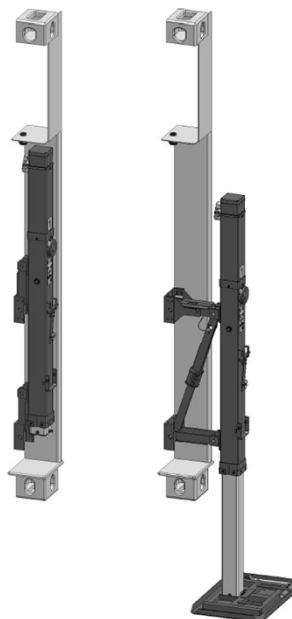
When setting up the tactical bringing into operation times of the container can be reduced by this integrated solution.

- Installation in a niche provided for this purpose.
- Can be folded onto the shelter for transport.
- Drive via ball screw, low maintenance.
- Manual operation with plug-in hand crank.
- Optionally with electric motors and automatic levelling control (0° or ground parallel).
- Removable foot plates, hand cranks.

239

Levelling supports with electric drive for containers up to max. 9 t total weight

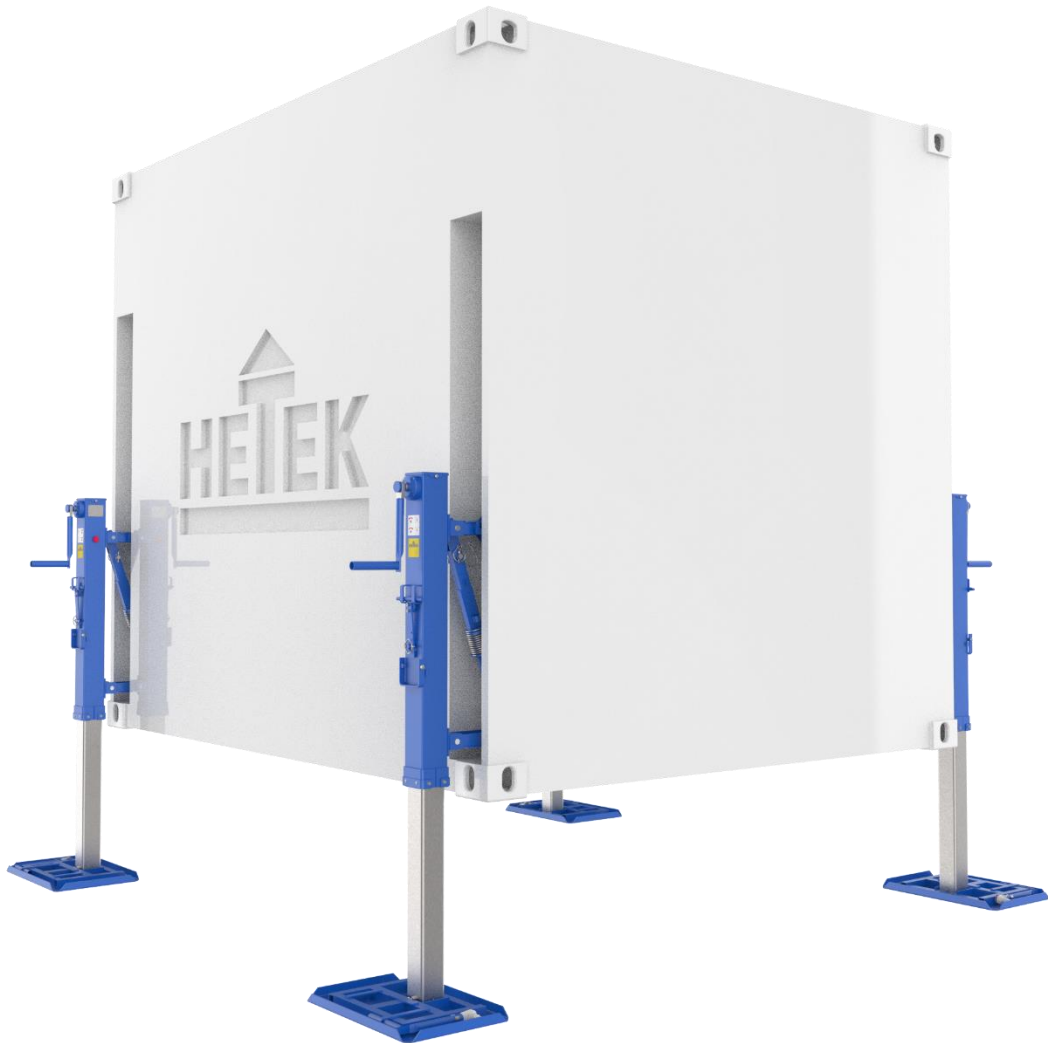
Model	239-T02
Maximum load capacity in the system	up to 9.000 kg
Maximum load capacity per support	up to 4.500 kg
Lifting height	700 mm - standard
Maximum lifting height (under reduced conditions)	up to 1.000 mm
Allowed ground inclination	3,5° - standard
Control tolerance for level control	±0,25° absolute
Wind load	20 m/s (72 km/h) - standard
Operating temperature range	-32°C - +49°C - standard
Power connection for electric drive	24 VDC



256

Levelling support

for a container with a total weight of up to 10 t, foldable



The leveling jacks series 256 with manual drive can be folded for transport into the niche. As a result, the containers outside dimensions are not exceeded and transport costs can be optimized. The tactical times for bringing into operation of the container can be reduced by this integrated solution.

- Installation in a niche provided for this purpose.
- Can be folded onto the shelter for transport.
- Drive via ball screw, low maintenance.
- Manual operation with plug-in hand crank.
- Removable foot plates, hand cranks.

256

Levelling support

for a container with a total weight of up to 10 t, foldable

Model	256-T01
Maximum load capacity in the system	10.000 kg
Maximum load capacity per support	5.000 kg
Lifting height	650 mm
Overall height	1.020 mm
Weight per support	ca. 59 kg
Allowed ground inclination	3,5° - standard
Wind load	20 m/s (72 km/h) - standard
Operating temperature range	-32°C - +49°C - standard



272

Levelling support

for containers with ISO corners, up to max. 16 t total weight



The supports series 272 are locked into the ISO corners and are characterized by high operating convenience of use and reliability. An additional conjugating top boom provide increased stability.

- Simple installation on the ISO corners.
- Manual drive based on trapezoidal thread spindle.
- Crank also serves as backstop.
- Manual operation with folding crank handle.
- Support adapter.

NATO-Stock-Number: 3950-12-376-3902

272

Levelling support

for containers with ISO corners, up to max. 16 t total weight

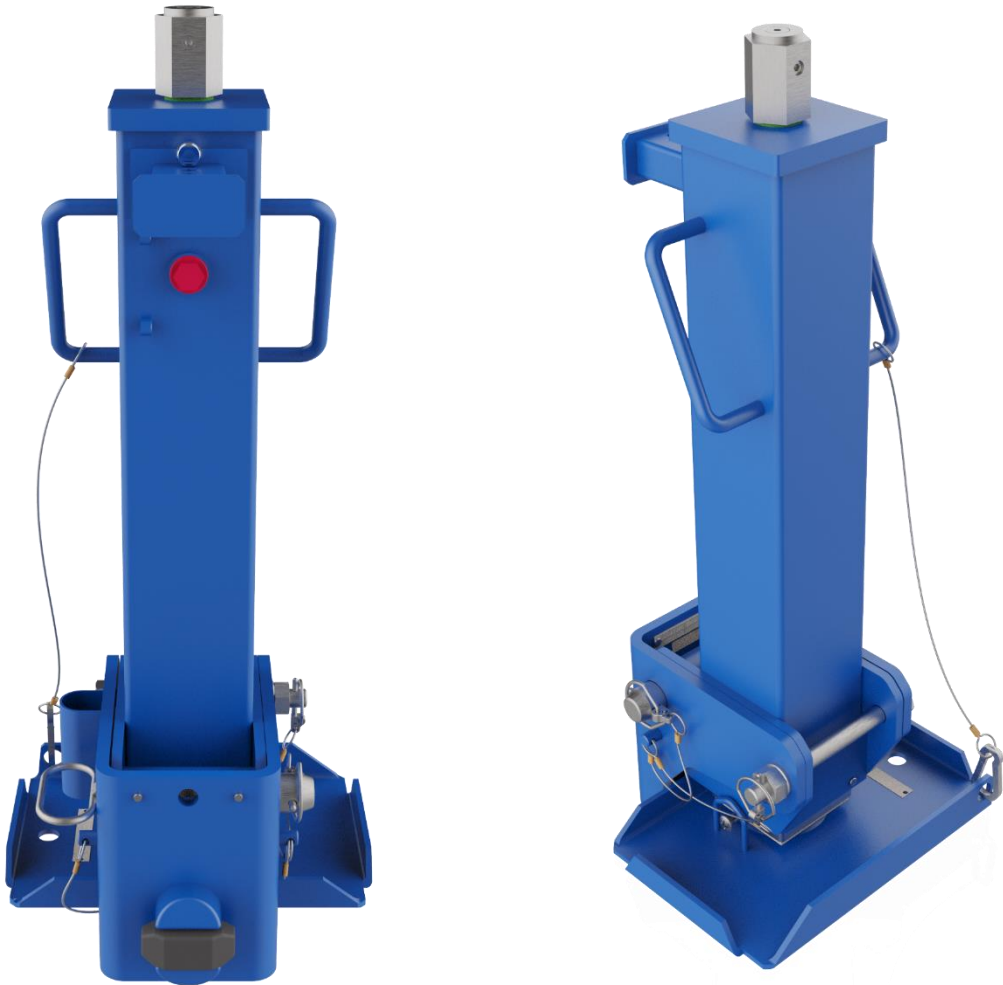
Model	272-T01
Maximum load capacity in the system	16.000 kg (dynamic) or 24.000 kg (static)
Maximum load capacity per support	8.000 kg
Lifting height	500 mm
Overall height	ca. 1.000 mm
Weight per support	ca. 50 kg
Allowed ground inclination	3,0°
Wind load	20 m/s (72 km/h)
Operating temperature range	-32°C - +49°C



286

Levelling support

for containers with ISO corners, up to max. 14 t total weight



The supports of the series 286 are locked into the ISO-corners. The spindle is capsulated and is directly driven manually from above by means of a ratchet crank. An additional conjugated locked upper boom provide increased stability.

- Simple installation on the ISO corners.
- Manual drive based on trapezoidal thread spindle.
- Direct spindle drive via a key or hand ratchet.
- Detachable, angle-movable foot plate.
- Support adapter for lateral stiffening.
- Ratchet wrench with extension.

286

Levelling support

for containers with ISO corners, up to max. 14 t total weight

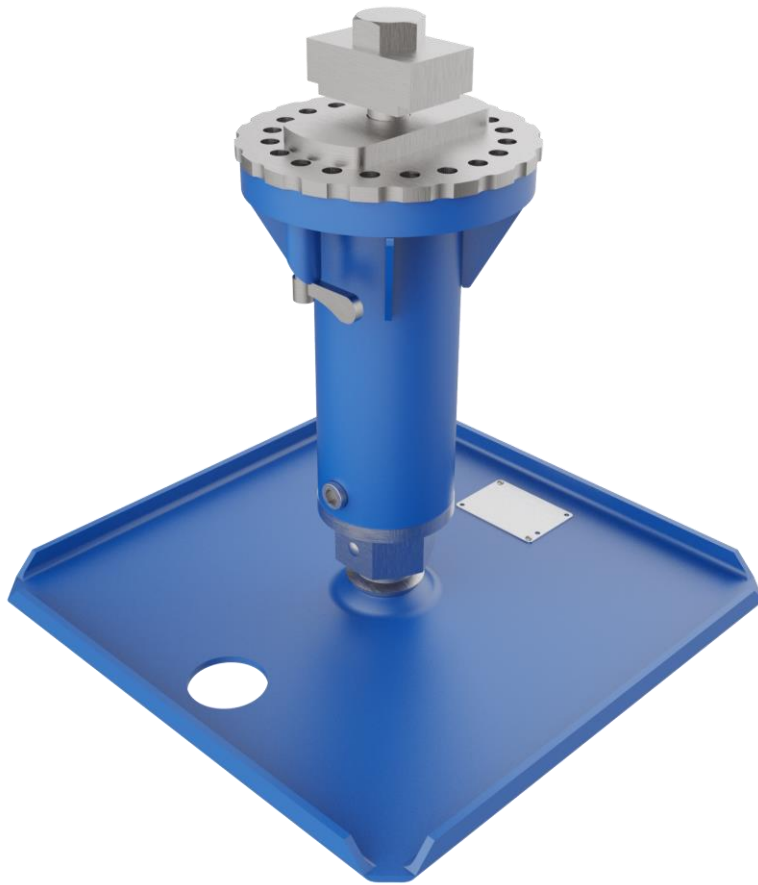
Model	286-T01	286-T02
Maximum load capacity in the system	14.000 kg	10.000 kg
Maximum load capacity per support	7.000 kg	5.000 kg
Lifting height	300 mm	500 mm
Overall height	ca. 735 mm	ca. 960 mm
Weight per support	ca. 33 kg	ca. 35 kg
Allowed ground inclination	3,5°	3,0°
Wind load	20 m/s (72 km/h)	20 m/s (72 km/h)
Operating temperature range	-32°C - +49°C	-32°C - +49°C



289

Levelling support

Sub frame levelling support 4.0 tons, 150 mm lifting height



The manually driven supports type 289 are locked from underneath into the ISO corners and used for leveling.

- Manual drive based on trapezoidal thread spindle.
- Direct drive by spanner or hand ratchet.
- Foot plate permanently attached.
- Also for shield shaped ISO-corner hole available (for vertically erected containers) - 289-T02

Model	289-T01 289-T02
Maximum load capacity in the system	up to 8.000 kg
Maximum load capacity per support	up to 4.000 kg
Lifting height	150 mm
Overall height	ca. 315 mm
Weight per support	ca. 20 kg
Allowed ground inclination	2,0°
Wind load	20 m/s (72 km/h)
Operating temperature range	-32°C - +49°C