

INKO21

+34 972 66 48 36

info@inko21.com

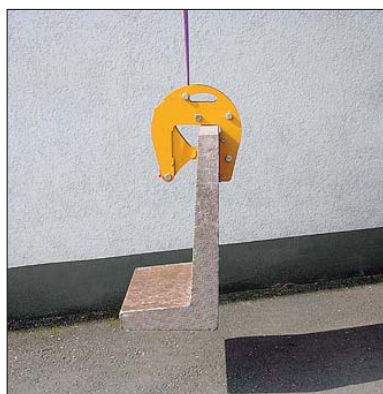
inko21.com

MANHOLE CLAMP



- Simple applying and disconnecting by means of holdfast application: clamp must not be lifted manually
- No adjustment of the clamping range
- Huge multiplication guarantees optimum safety
- Manhole clamp SZA for manholes and cones according to DIN 4034 Part 1 and 2
- With spring tension
- With web sling or high-strength chains

The new generation: the manhole clamp with the huge multiplication for optimum safety



The manhole clamp is used for the transport and laying of manholes.

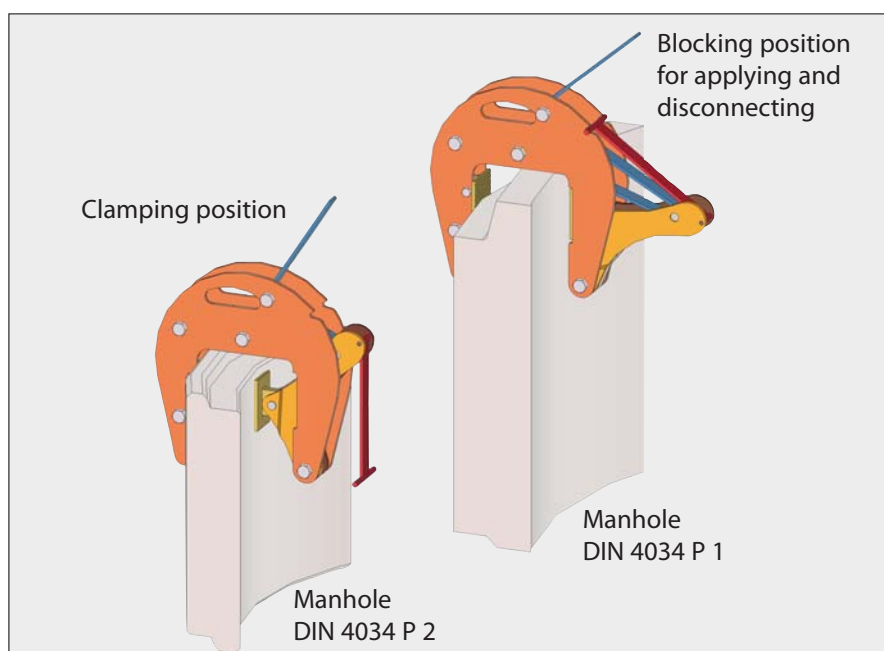
No adjustment of the clamping range is necessary. Accidents caused by incorrect adjustment are excluded.

Due to the holdfast application the clamp must not be lifted when applying and disconnecting.

The manhole clamp can be used for all standard manholes:

- thin-walled manholes
- SZA for manholes according to DIN 4034 Part 1 + 2
- SZM for manholes according to DIN 4034 Part 2
- symmetrical conical manholes (cones) according to DIN 4034
- asymmetrical conical manholes (cones) according to DIN 4034

Patent application made for the manhole clamp.



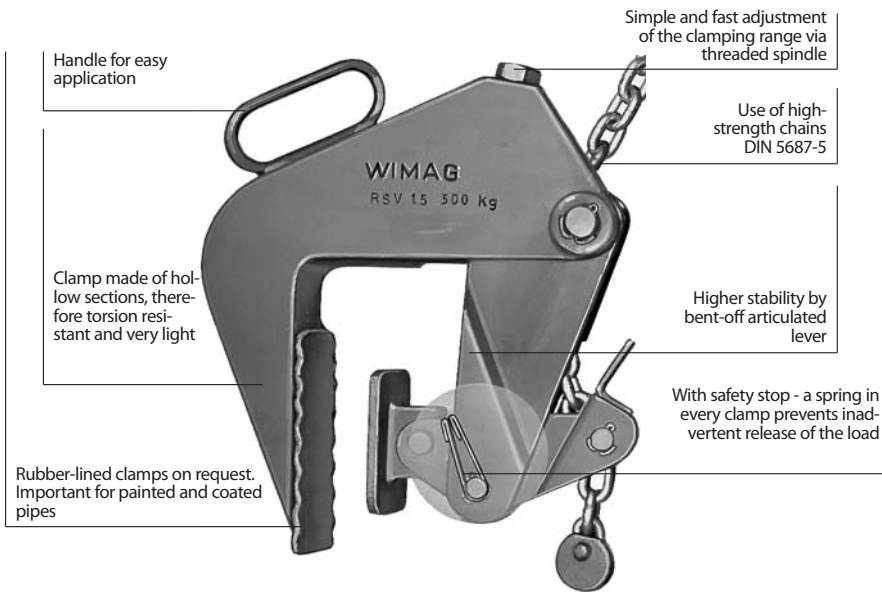
Order No.	Model	Carrying Capacity kg	Number Of Clamps / Unit	Contact Surface Of Jaws	Clamping Range mm	For Manhole Inside Diameter m	Length Of Web Sling m	Weight Approx. kg
105 002	SZM 1,0	1.000	2	Serrated	40 - 120	0,8 - 2,0	1,45	16
105 003	SZM 1,5	1.500	3	Serrated	40 - 120	0,8 - 2,0	1,45	28
105 004	SZML 1,5	1.500	3	Serrated	40 - 120	0,8 - 2,8	2,05	29
105 020	SZA 2	2.000	2	Serrated	60 - 180	0,8 - 2,0	1,45	28
105 030	SZA 3	3.000	3	Serrated	60 - 180	0,8 - 2,0	1,45	40
105 033	SZAL 3	3.000	3	Serrated	60 - 180	0,8 - 2,8	2,05	41
105 040	SZA 4	4.000	4	Serrated	60 - 180	0,8 - 2,5	1,45	55
Clamp with high-strength chains								
105 005	SZM 1,5 K	1.500	3	Serrated	40 - 120	0,8 - 2,0	1,60	32
105 023	SZA 2 K	2.000	2	Serrated	60 - 180	0,8 - 2,0	1,60	31
105 031	SZA 3 K	3.000	3	Serrated	60 - 180	0,8 - 2,0	1,60	45
105 034	SZAL 3 K	3.000	3	Serrated	60 - 180	0,8 - 3,0	2,20	47

PIPE SUSPENSION GRAB



The Original For Your Safety . . .

Only an original WIMAG pipe suspension grab can provide all advantages:

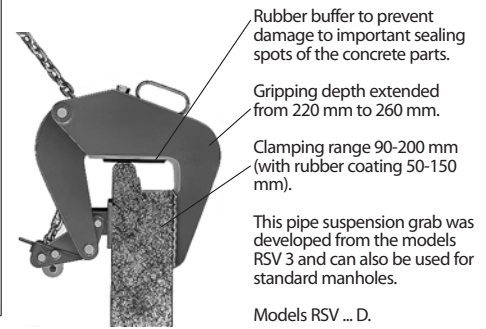


Problem:

The handling of prefabricated manholes according to **DIN 4034 Part 1** with socket end for axial seal.

Solution:

The WIMAG pipe suspension grab RSV ... D offering the following advantages:



A rubber-coated pipe suspension grab is needed for smooth, painted or coated manholes!

Order No.	Model	Carrying Capacity kg	Number Of Clamps	Contact Surface Of Clamps	Clamping Range mm	Manhole Inside Diameter m	Chain Length m	Weight Approx. kg
Pipe suspension grabs for manholes according to DIN 4034 Part 2								
110 010	RSV 1,5	1.500	3	steel/serrated	40 - 120	0,4 - 2,0	1,50	31
110 011	RSVL 1,5	1.500	3	steel/serrated	40 - 120	0,4 - 3,0	2,00	33
110 020	RSVG 1,5	1.500	3	rubber-coated	0 - 70	0,4 - 2,0	1,50	34
110 510	RSV 3	3.000	3	steel/serrated	50 - 180	0,4 - 2,0	1,60	55
110 511	RSVL 3	3.000	3	steel/serrated	50 - 180	0,4 - 3,0	2,20	58
110 520	RSVG 3	3.000	3	rubber-coated	0 - 130	0,4 - 2,0	1,60	55
110 530	RSV 3/230	3.000	3	steel/serrated	90 - 230	0,4 - 2,0	1,60	54
110 531	RSVL 3/230	3.000	3	steel/serrated	90 - 230	0,4 - 3,0	2,20	58
110 540	RSVG 3/180	3.000	3	rubber-coated	50 - 180	0,4 - 2,0	1,60	56
110 110	RSVE 0,5	500	1	steel/serrated	40 - 120	-	0,80	10
110 610	RSVE 1	1.000	1	steel/serrated	50 - 180	-	0,80	17
110 210	RSV 1	1.000	2	steel/serrated	40 -120	0,4 - 2,0	1,50	21
110 710	RSV 2	2.000	2	steel/serrated	50 - 180	0,4 - 2,0	1,60	33
110 850	RSVTL 4	4.000	4	steel/serrated	50 - 180	1,0 - 3,0	2,20	85
Pipe suspension grabs for manholes according to DIN 4034 Part 1 and 2								
110 515	RSV 3/200 D	3.000	3	steel/serrated	90 - 200	0,4 - 2,0	1,60	69
110 516	RSVL 3/200 D	3.000	3	steel/serrated	90 - 200	0,4 - 3,0	2,20	73

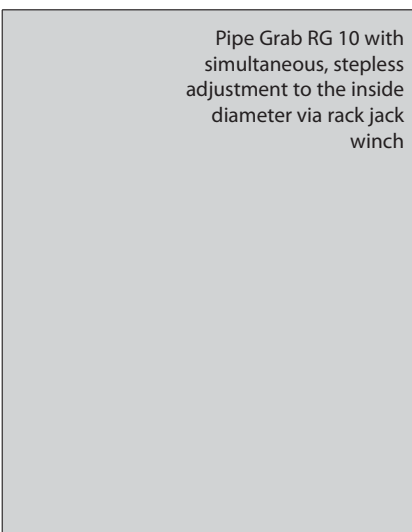
PIPE GRAB



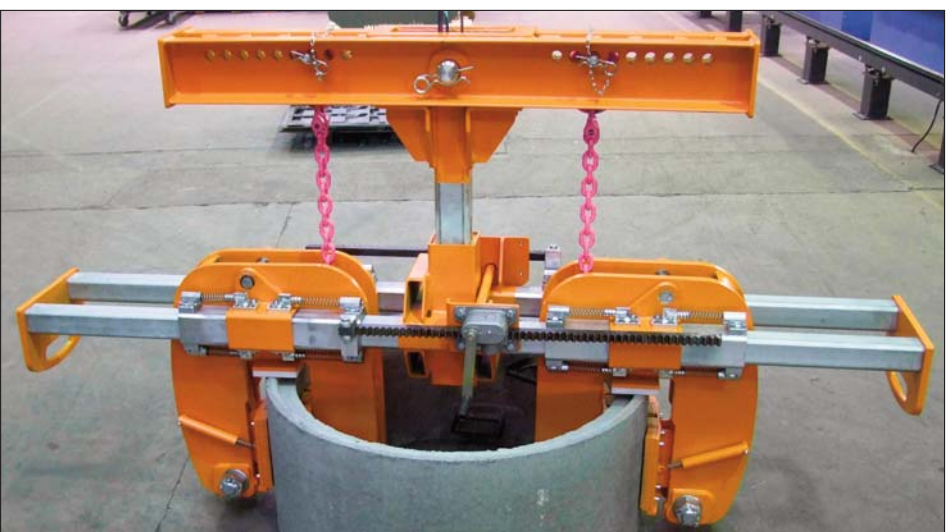
RGA-300 with cantilever KA-300 for the automatic fork lift transport



Pipe Grab RG 3,5 with simultaneous, stepless adjustment to the inside diameter via rack jack winch



Pipe Grab RG 10 with simultaneous, stepless adjustment to the inside diameter via rack jack winch



- One man operation via mechanical automatic switching equipment
- Fast and safe pipe transport
- Applicable on every hoist

Order No.	Model	Carrying Capacity kg	Inside Diameter mm	Wall Thickness mm	Clamping Jaws	Weight approx. kg
112 010	RGA 300	3,000	800 - 2,500	90 - 200	3 units / steel	205
112 510	Cantilever KA	3,000				115
112 602	RG 3,5	3,500	400 - 800	45 - 60	2 units / rubber coating	230
112 603	RG 10	10,000	900 - 1,600	60 - 100	2 units / rubber coating	1,070

MANHOLE AND CONE LIFTER



- The compact lifter for manholes and cones
- No crushing hazard
- Two tensioning heights for manholes and cones
- Simple adjustment

Order No.	Model	Carrying Capacity kg	Cones mm	Manholes mm	Weight kg
113 100	Manhole Lifter SHB	1,500	DN 625 / 800	1,000 / 1,200	154
113 110	Adapter	1,500		1,500	

PIPE LAYING HOOK / C-HOOK

Pipe laying hook RHK

- For pipe lengths up to 1.0 m
- With safety chain
- With guide handle

Order No.	Model	Carrying Capacity kg	Hook Opening mm	Weight kg
115 010	RHK 1/1	1,000	190	21
115 025	RHK 3/1	3,000	260	45



Pipe laying hook RHSV

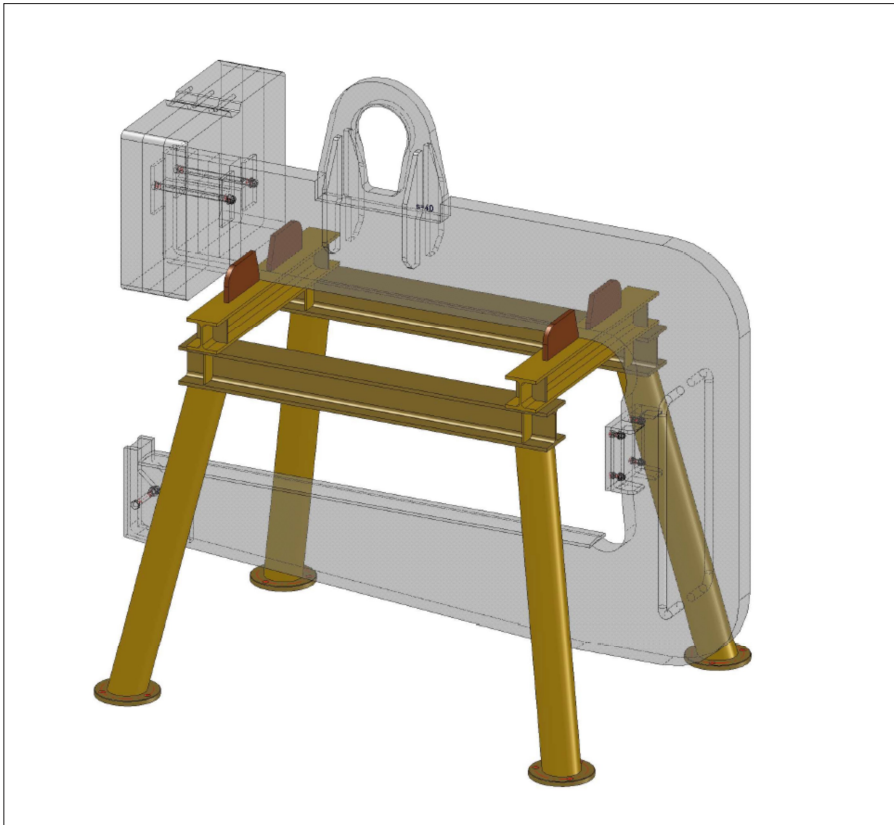
- For pipe lengths up to 3.0 m
- With automatic weight counterbalance
- With adjustable buffer stop
- With safety chain
- With guide handle

Order No.	Model	Carrying Capacity kg	Hook Opening mm	Minimum Weight* approx. kg	Weight kg
115 210	RHSV 1/3	1,000	300	350	180
115 325	RHSV 3/3	3,000	460	1,000	310
115 335	RHSV 7.5/3	7,500	500	3,000	732



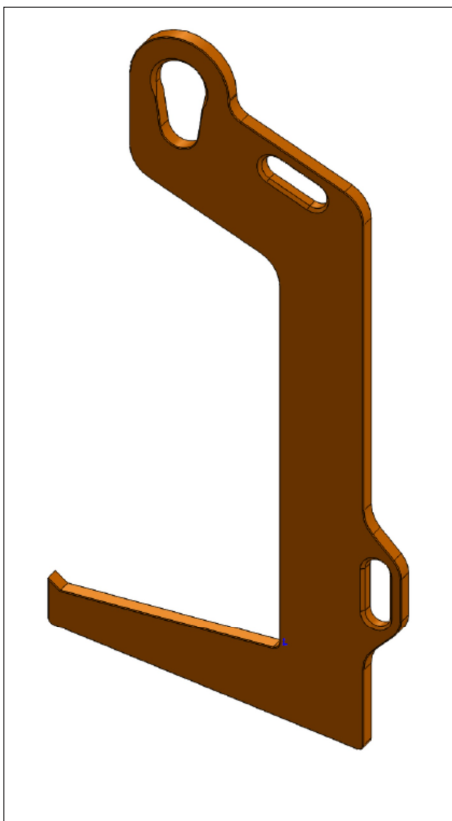
* For the function of the weight counterbalance a minimum pipe weight is required. Lighter pipes cannot be handled by model RHSV.

Special designs

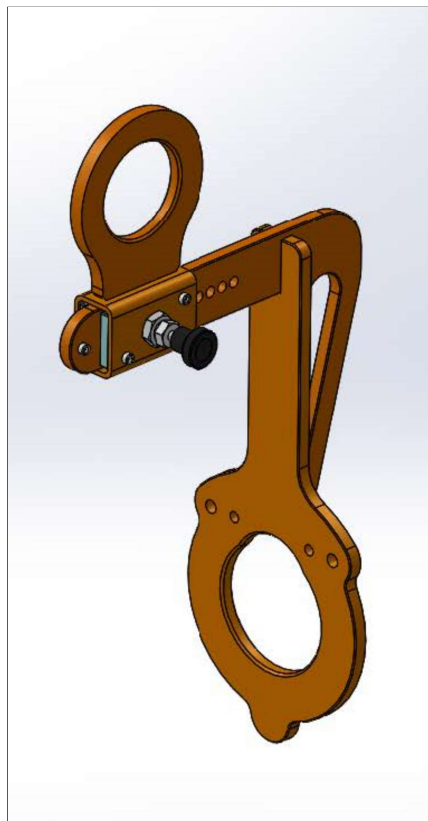


115 601
Loading fork LG 0.4
Carrying capacity 40 kg

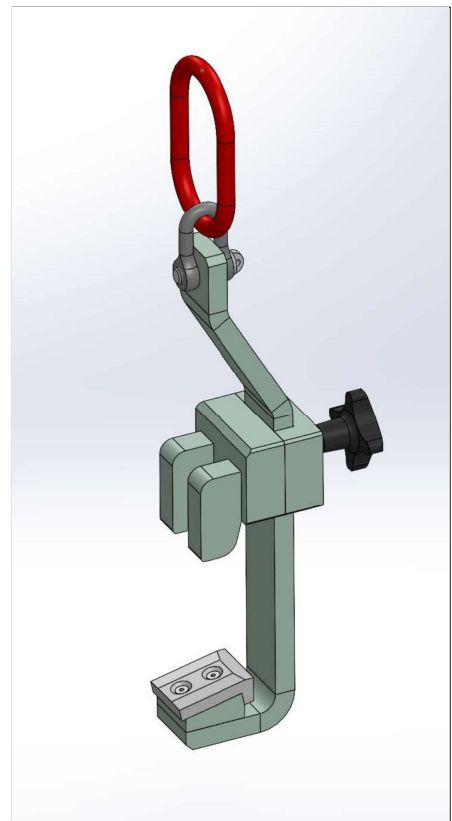
115 518
C-hook with counterbalance
and storage rack
Carrying capacity 15 t
Coil width 1.5 m



115 547
C-hook CH 5
Carrying capacity 5 t



115 637
C-hook CH 0.1-0.2
Carrying capacity 100 kg



115 652
C-hook CH 0.15
Carrying capacity 150 kg

PIPE CHAIN SLING

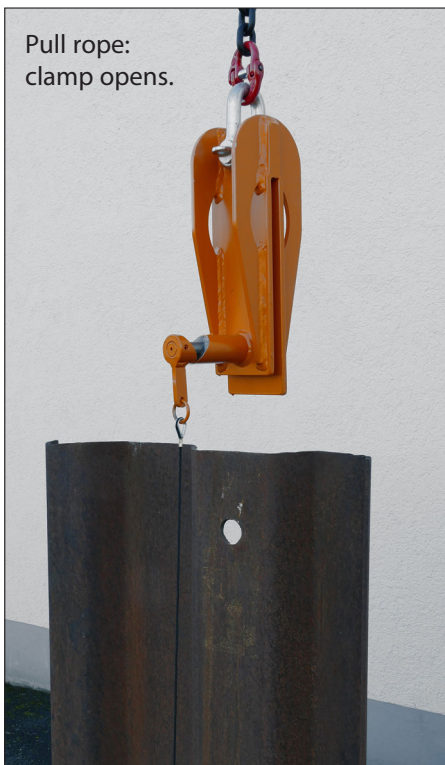


Effortless transport of pipes/reinforced concrete pipes due to weight reduction by approx. 50%

Order No.	Model	Carrying Capacity kg	Inside Diameter Of Pipes DN	Pipe Length m	Socket Depth mm	Hook Opening mm	Reach Depth mm	Weight kg
118 100	ROG 1.2	1,200	300/400/500	2.5/3.0	max. 100	170	300	15
118 200	ROG 2.6	2,600	600 - 900	2.5/3.0	max. 120	220	350	35
118 400	ROG 4.3	4,300	1,000 - 1,200	2.5/3.0	max. 120	270	390	72

Hooks are also available with edge protection. The hook opening is then reduced by approx. 15 mm.

SHEET PILE CLAMP



- For safe transport of sheet piles
- Opening and locking with the rope
- Delivered with suspension eye, chain, shackle and 6 m rope

Order No.	Model	Pulling Force	Opening Width	Diameter Of Bolt	Weight
123 100	LZ-1.0	1,000 kg	10 mm	16 mm	4 kg
123 300	DZ-3.0	3,000 kg	17 mm	20.5 mm	15 kg
123 301	DZ-4.0	4,000 kg	40 mm	35 mm	24 kg

MINI PIPE LAYER



- Effortless laying of ductile pipes
- Equipped with 2 sets of spare clamping jaws
- Equipped with an adaptor plate and an rotator
- Minimum space required

Order No.	Model	Carrying capacity kg	Pulling force max. t	Outer diameter of the pipe mm	Lifting height mm	Weight kg
124 100	RLP-0.3	300	3,25	118 - 325	300	325

3 hydraulic circuits are needed. Oil pressure of the excavator: 150-200 bar. Volume flow approx. 5 l/min.

PIPE PULLING DEVICE



- The pipe pulling device for concrete and vitrified clay pipes with bell-shaped socket end
- No power or other additional power packs necessary
- Powerfull joining with the hydraulic power pack
- Simple operation by hand pump

Pipe Pulling Device

Pipe pulling device, basic equipment with tensioning cylinder for tensioning on the pipe _____

Pump lever for manual operation _____

Hydraulic power pack with oil tank, pressure gauge and valve _____

Max. pressure: 150 bar

Tensioning arms, adjustable to suit the required pipe outside diameter _____

Pulling cylinder, stroke 300 mm _____

Clamping jaws _____

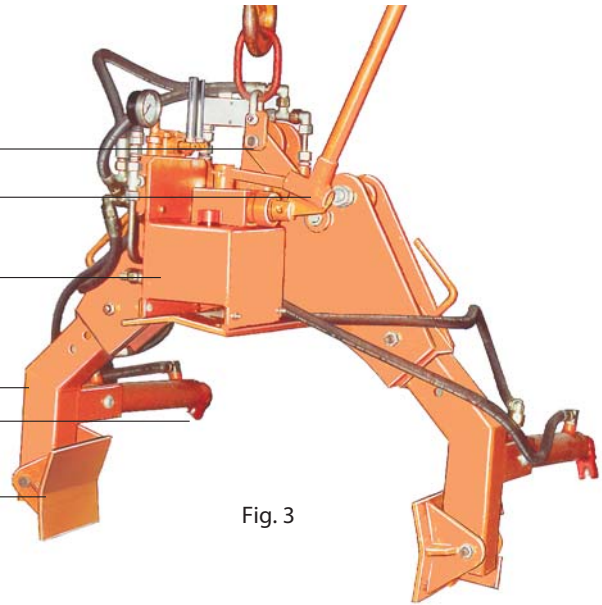


Fig. 3

Working procedure

- Adjust the length of the two clamping arms to suit the new pipe diameter
- Tension the pipe pulling device behind the socket end of the previously laid pipe
- Position the next pipe to be laid
- Fit the pulling bar and fix the pulling chains (Fig. 1)
- Pull the pipe via the two pulling cylinders

Order No.	Model	Pulling Force Max.* Approx. t	For Pipe Outside Diameter mm	Stroke mm	Weight Approx. kg
125 200	RZA-350-750	1.5	350 - 750	300	177
125 300	RZA-600-1250	1.5	600 - 1250	300	317

Delivered unit: standard equipment complete with hydraulic installation, two pulling chains of 15 m length each, pulling bar.

*) The pulling force depends on the pipe weight and the pipe surface. Therefore, a general specification is not possible.



Pipe puller RZE
joining kite-shaped
profiles with 4-track
undercarriage

- ❑ **Safe and fast joining of reinforced concrete pipes**
- ❑ **No trailing cables due to battery operation**
- ❑ **Tensioning and pulling by push button control via hydraulic cylinders**

WIMAG Pipe Puller RZE: the perfect pipe puller for reinforced concrete pipes

The Pipe Puller RZE has been specially designed for the laying of reinforced concrete pipes and is well proven worldwide.

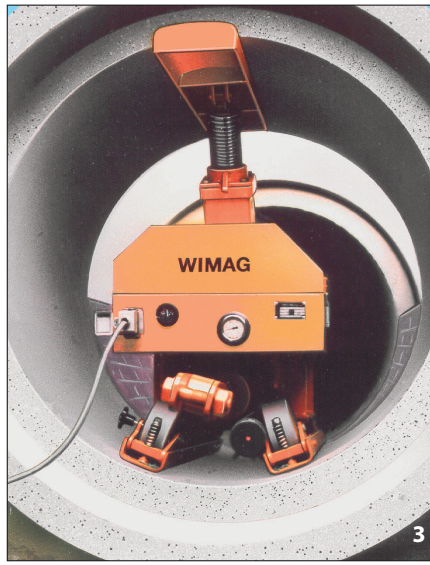
The hydraulic system is supplied by a 12 V battery, therefore, there are no trailing cables. The maximum pressure of the hydraulic system can be continuously adjusted. The pressure and battery are monitored by control instruments.

The adjustment to suit the new pipe dimension is effected via a spindle or by the exchange of a support, if necessary.

The excavator lifts the RZE into the pipe using a chain sling (Fig. 2). The RZE can be moved easily on its four wheels within the pipe and hydraulically clamped in every position via a bush button, at the same time the wheels will swivel upwards. The three big clamping surfaces prevent damage to the pipe (Fig. 3).

The joining of the pipe is effected by the retraction of the hydraulic cylinder via the pulling bar and the polyester sling. After the extension of the pulling cylinder the RZE will be released via a push button and pulled forward by one pipe length.

The control cable can be replaced by a remote control, if necessary (Fig. 4). Other accessories are available.

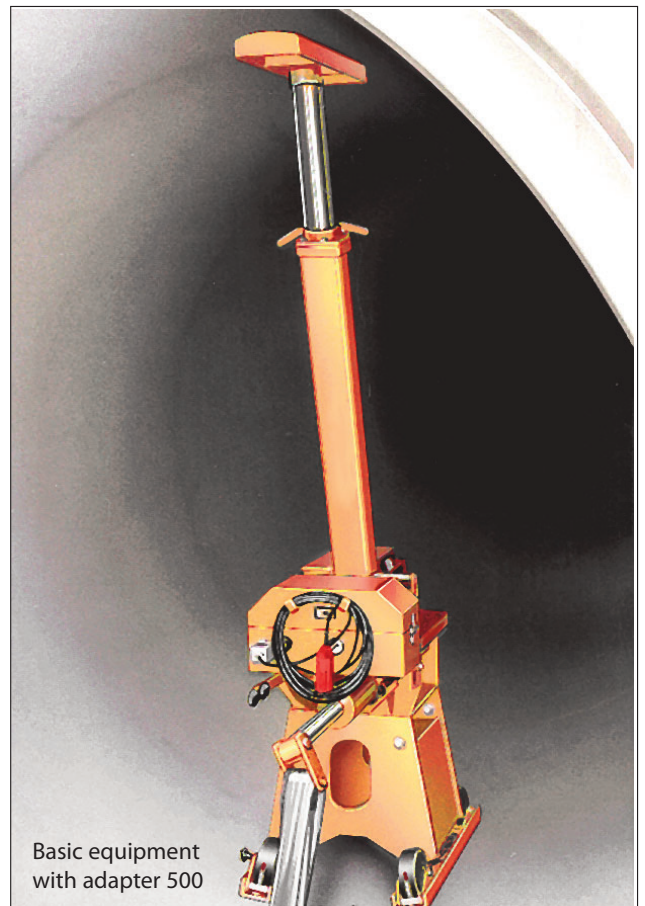


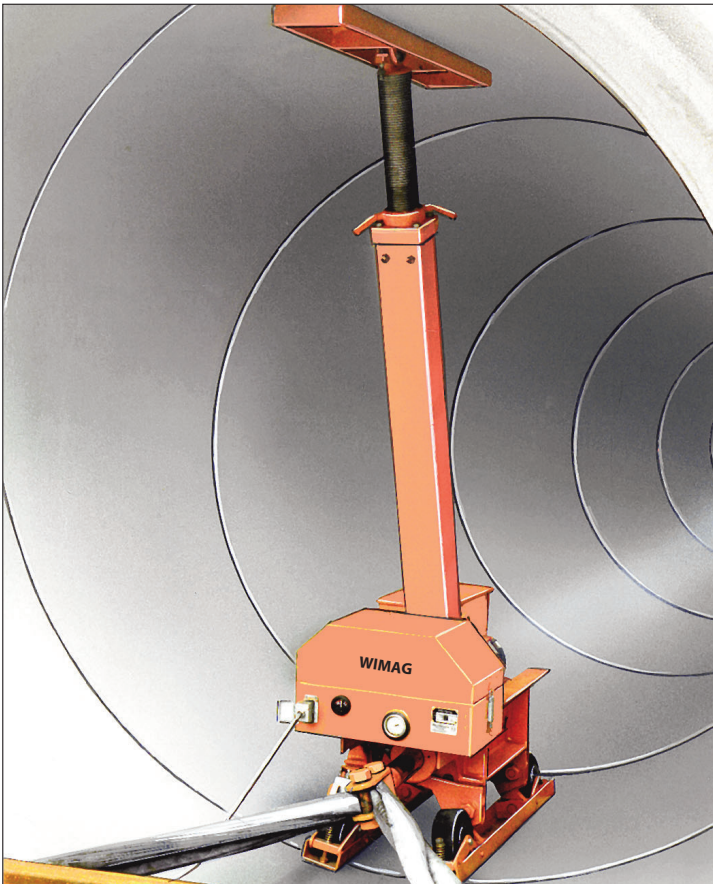
SPECIFICATION

Pulling force max. for reinforced concrete pipes, inside diameter	16 t (800) 1,000-2,500 (3,000) mm	Stroke of pulling cylinder	500 mm
Control	pendant control and 10 m cable	Hydraulic system	1.6 kW, 12 V
Pulling sling	polyester sling, lengths of 4 m and 8 m	Battery	12 V, 180 Ah
		Total weight	625 kg

Order No.	Type	
128 600	Basic equipment complete	ready for operation, with hydraulic system and battery - with supports for pipe inside diameter 800-1,000 mm, 1,100-1,500 mm, 1,600-2,000 mm, 2,100-2,500 mm - spindle short for pipe inside diameter 800-1,000 mm - spindle long for pipe inside diameter 1,100-2,500 mm - control cable of 10 m length and pendant control - polyester sling, working length of 4 m, polyester sling working length of 8 m, shortening eye and shackle - pulling bar for pipe inside diameter 800-1,400 mm - pulling bar for pipe inside diameter 1,500-2,500 mm - transport sling
128 501	Charger	220 V / 12 V
128 995	Remote control	see Figure 4
045 322	Adapter 130	for height increasing of effective height by 130 mm
040 716	Adapter 500	for pipe inside diameter 2,500–3,000 mm, with pulling bar extension
128 993	4-track carriage	for kite-shaped profiles
049 037	Undercarriage enlargement	Wheel base 700 mm, for pipes with dry-weather channel
128 460	Pulling bar for rectangular pipes	for working width of 1,400-2,000 mm
128 470	Pulling bar for rectangular pipes	for working width of 1,800-2,600 mm

APPLICATIONS





PIPE LAYER



- Automatic pickup of the pipe layer via quick change system of the excavator
- Lifting of the pipes by the excavator; transport without tilting of pipes
- Equipped with a pipe pushing unit for a safe pipe connection as option
- One man operation
- Connection to the hydraulic power take-off system of the excavator
- Horizontal rotation by +/- 30°
- Additional protection against pipe slippage
- No personnel within the dangerous area

The Pipe Layer for the safe pipe transport and professional pipe laying



The hydraulic pipe layer is designed for the transport and the laying of pipes up to 3,000 kg of weight.

The pipes are picked up inside the pipe by means of a lifting arm. Therefore, also horizontal pipes can be placed very close to each other e.g. on lorries and pipes can be independently offloaded by the operator of the excavator without problem (single man operation).

The pipe layer is screwed to the quick change system of the excavator via the adaptor plate.

The operation of the pipe layer is carried out by the driver of the excavator via the hydraulic power take-off system on excavator. For this two free hydraulic circuits are required.

For quick picking up of pipes and exact alignment within the trench the pipe layer is equipped with a rotating cylinder enabling a horizontal rotation of the pipe by +/- 30°.

During transport the pipe is secured by a hydraulic clamping device to prevent slippage.

Specification RL 3

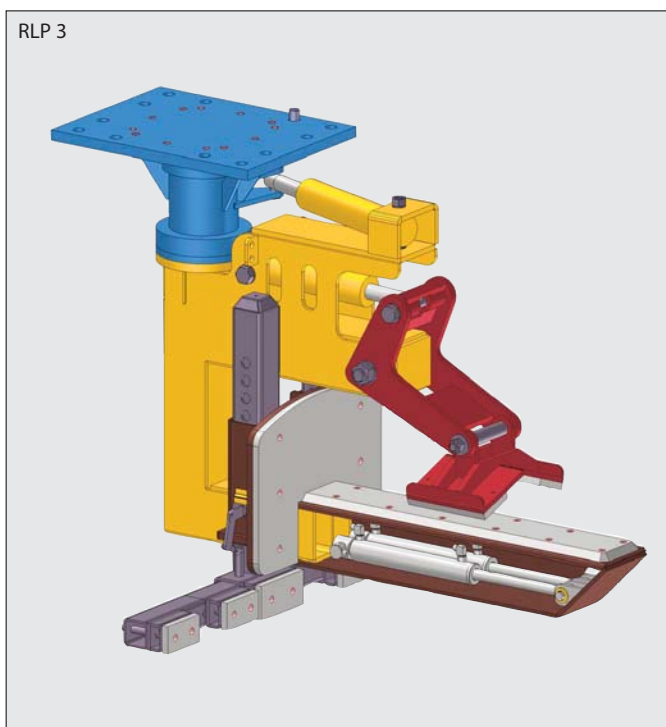
Max. safe working load	3,000 kg
Pipe inside diameter	300 - 1,000 mm
Weight without pushing unit approx.	590 kg

For the laying of pipes the pipe layer can be equipped with a pipe pushing unit. During this operation the pushing cylinder pushes pipe forwards and joins with the pipe already laid (see figure).

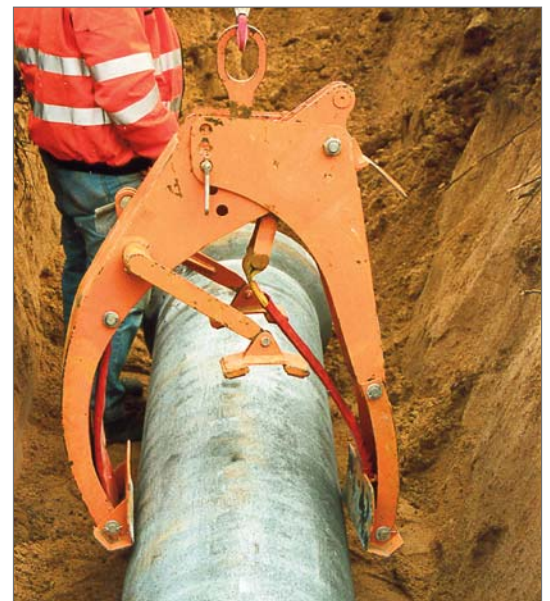
Specification RLP 3

Max. safe working load	3,000 kg
Pipe inside diameter	400 - 1,000 mm
Pushing distance	300 mm
Max. pushing force	8 t
Max. weight with pushing unit approx.	760 kg

Specials designs on request.



ROUND GRAB



The Strong Combination of Grab and Sling for the Safe Handling of Cylindrical Parts (Pipes, Cylinders ...)

Sling or Pipe Grab ?

Slings can be used for handling pipes when the pipes are positioned on a squared beam and when the sling can be pushed through underneath the pipe. The advantages of the slings are, however: high carrying capacity, lightweight and inexpensive.

Pipe Grabs are mechanical grabs. They are very solid and assure safe pipe handling. A complete encircling of the load is not necessary as the load is held by frictional and embracing forces.

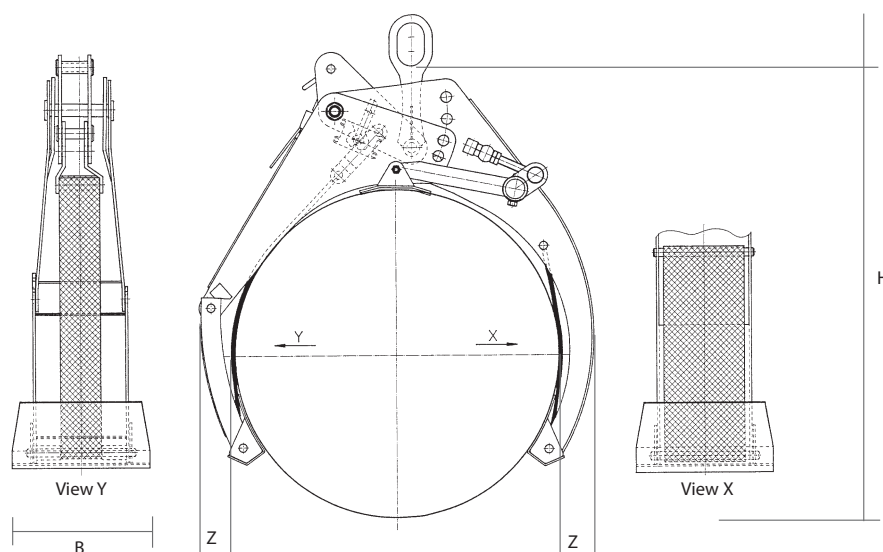
Why not combine both advantages in one single piece of equipment ?

The result is the WIMAG Round Grab WRG:

The solid steel construction assures safe pipe handling even under the toughest circumstances. Due to the built-in automatic mechanism, the round grab opens and closes automatically when picking up or positioning the pipe. The large clamping range is quickly and simply adjusted via a bolt. A control panel guarantees the correct adjustment of the clamping range. The easily adjustable support provides additional safety during handling. The solid suspension eye can be fitted into any lifting equipment.

The wide slings assure careful and safe transport even of delicate or coated pipes. The slings are covered with a protective tube. The slings are additionally protected against wear and tear by protective plates situated at the bottom.

Application made for patent rights.



Order No.	Model	Carrying Capacity kg	Pipe Outside Diameter mm	Height H mm	Width B mm	Z* mm	Weight kg
131 010	WRG 1.5-47	1,500	200 - 470	930	340	110	56
131 020	WRG 1.5-80	1,500	300 - 800	1,350	350	120	90
131 030	WRG 5-150	5,000	600 - 1,500	2,300	500	200	425
Round grab with steel sling and steel tensioning sling							
130 030	RRG 3-120	3,000	600 - 1,250	2,000	550	120	300
130 050	RRG 10-200	10,000	1,000 - 2,000	3,000	750	300	1,080
130 060	RRG 12-250	12,000	1,500 - 2,500	3,600	750	400	1,450
Enquire about our special constructions.						* Adjustment to suit the max. diameter	

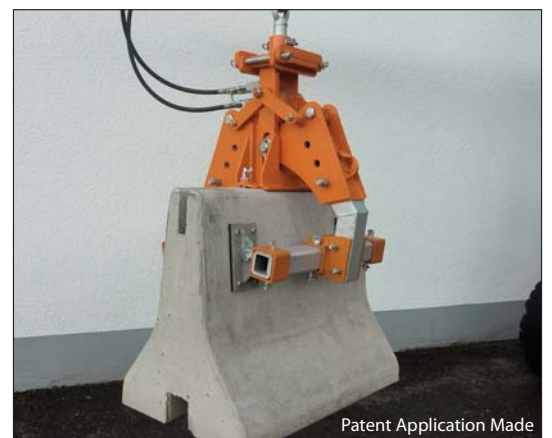
ROUND CLAMP





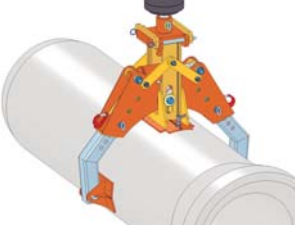




- No need to adjust the clamping range
- Minimum throat width due to adjustable limit stop
- Equipped with an adjustable support
- Automatic operation by lifting/lowering automatic system

Order No.	Model	Carrying Capacity kg	Clamping Range mm	Weight kg
132 100	Round Clamp RZ 1.5-80	1,500	400 - 800	150

HYDRO GRAB

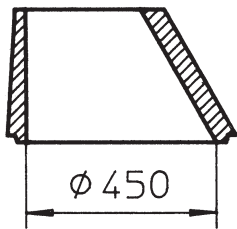


- The perfect hydraulic grab for pipes, manholes, conical manholes, L-shaped stones, concrete protection barriers, ...
- The optimum attachment for your excavator, wheel loader, crane, ...

Specification		Order No.
	<p>Hydro Grab Basic equipment with suspension eye, connectable to a free hydraulic control circuit of the lifting equipment. Carrying capacity: 1,500 kg Dimensions: 700 x 400 x 700 mm Weight: 93 kg</p>	<p>134 100</p>
	<p>Clamping Unit For Manholes to transport manholes of an inside diameter of 800 – 1,500 mm. Carrying capacity: 1,500 kg Weight: 42 kg</p>	<p>134 200</p>
	<p>Clamping Unit For Pipes to transport pipes of an outside diameter of 350 – 750 mm. Carrying capacity: 1,500 kg Weight: 26 kg</p>	<p>134 300</p>
	<p>Clamping Unit For Conical Manholes to transport conical manholes of an upper inside diameter of 625 / 800 mm. Carrying capacity: 1,500 kg Weight: 118 kg</p>	<p>134 400</p>
	<p>All-Purpose Clamping Unit Outside tensioning: clamping range 0 - 1,300 mm Inside tensioning: clamping range 400 – 1,500 mm Carrying capacity: 1,000 kg Weight: 40 kg</p>	<p>134 500</p>
	<p>Clamping Unit For Concrete Protection Barriers e.g. New Jersey Profiles, clamping jaws with grey rubberised coating. Clamping range: 80 - 480 mm Carrying capacity: 1,500 kg Weight: 83 kg</p>	<p>134 600</p>
	<p>Rotator for attachment a second hydraulic control circuit must be provided for the lifting equipment. Carrying capacity: 3,000 kg Weight: 23 kg</p>	<p>134 700</p>

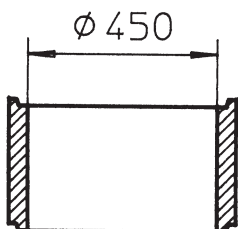
ROAD GULLY GRAB

A grab for base-, cylindrical- and conical drain assemblies !



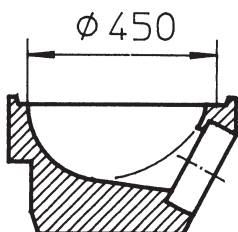
The laying and positioning of street grates according to DIN 4052 in drain excavations is the strenuous daily routine of a civil engineer. The base drain assemblies weighing up to 250 kg have to be laid precisely by hand which often requires considerable effort and time.

Using the new road gully grab SAG-450 the job can easily be carried out by one person: precisely and saving time. The operation should be carried out close to the ground.



The operation is very simple: the SAG is positioned onto the base drain assembly which is to be laid and the lifting equipment is attached. After raising the safety catch, the **base drain assembly** can be lowered into the drain excavation and positioned. After setting down the assembly, the grab opens automatically.

The laying of the **cylindrical drain assembly** is carried out in the same way: simple and economically.



For the laying of **conical drain assemblies**, the bolt must be reset. Due to the swivelling clamping jaw, the conical drain assembly may be lifted immediately above the centre of gravity.

A patent has been issued for the road gully grab.

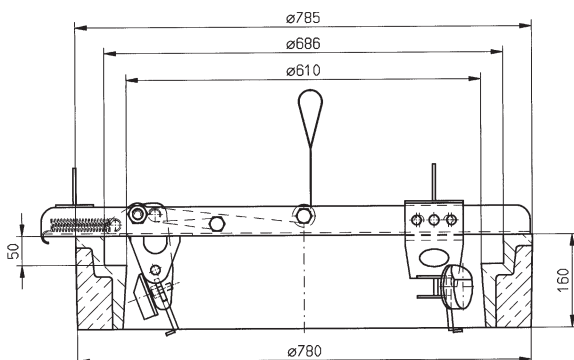
Order No.	Model	Carrying Capacity kg	Clamping Range mm	Weight kg
135 010	SAG-450	250	460 - 560	12

INTERNAL MANHOLE HOUSING GRAB

The ideal grab for the transport of manhole grates according to DIN EN 124, DIN 1229



- For the **transport of housing and cover** with manhole cover vents* according to EN 124 /DIN 1229.
- **Great safety** due to huge lever force.
- **Sling** instead of chain/rope: low weight, no twisting, no injuries.
- Simply pull stop bolt to pick up the load.
- **Automatic opening** due to spring tension.
- **Easy handling** by compact and convenient construction.
- **The equipment is galvanized.**



* The manhole cover vents are not standard. Therefore it cannot be guaranteed that both load hooks fit each individual cover.

Order No.	Model	Carrying Capacity kg	Clamping Range mm	Weight kg
136 100	RGI-610	200	610 / 625	12

MANHOLE HOUSING GRAB

One grab for housing and cover !



The manhole housing grab enables simple and safe transport and laying of manhole covers according to EN 124 / DIN 1229.

The housings as well as the covers can be safely lifted and laid by the manhole housing grab.

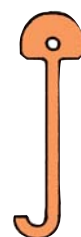
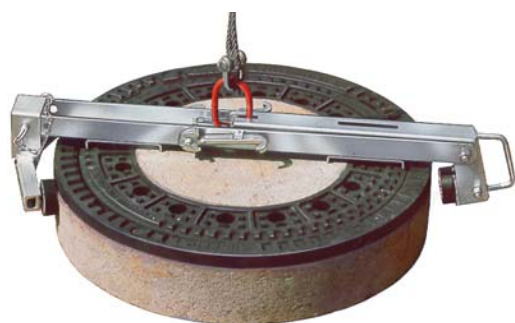
The suspension eye of the manhole housing grab is fitted to the load hook of the excavator / loader and is then positioned onto the manhole cover. After releasing the safety catch the housing and the cover are lifted and positioned on the conical drain assembly.

When setting down the manhole cover the safety catch blocks itself and the grab opens automatically.

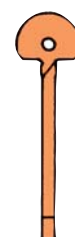
When turning the grab 180° the covers can be easily taken out of the housing using the grab and the hooks.

The manhole housing grab is galvanized as standard.

A patent has been issued for the manhole housing grab.



Hook A



Hook B

Order No.	Model	Carrying Capacity kg	Housing Diameter mm	Weight Approx. kg
137 010	RG-750	200	750 / 785	15
137 410	Hook A	100		0,25
137 420	Hook B	100		0,25

MANHOLE COVER LIFTER



- No more back injuries
- Operation using a ratchet and a spindle: no oil leakage

Order No.	Model	Safe Working Load	Lifting Height	Hook Distance min./max.	Wheel Base	Dimensions Dismantled	Weight
138 100	Manhole Cover Lifter KDH	1,000 kg	250 mm	260 / 980 mm	1,100 mm	1,200 x 300 x 350 mm	31 kg
138 410	Key A						0.3 kg
138 420	Key B						0.3 kg
138 430	Loop						0.6 kg

ALUMINIUM TRIPOD



- Light aluminium construction
- Simple transport due to telescopic height adjustment
- Spikes as standard
- Equipped with swivelling suspension eye

Accessories:

- Rubber plates (for solid ground)
- Safety chain (for smooth ground)
- Hoist

Order No.	Model	Carrying Capacity kg	Length Of Support L Min./Max. m	Clearance Height ¹⁾ H Min./Max. m	Spreading Angle ¹⁾ B Min./Max. m	Weight Approx. kg
140 001	D-250	250	1,18 / 1,88	0,94 / 1,58	0,94 / 1,50	10
140 009F	D-250 Mobile	250	1,85 / 3,10	1,46 / 2,57	1,40 / 2,40	36
140 003	D-500	500	1,50 / 2,50	1,15 / 2,05	1,20 / 1,95	17
140 033	D-500/EN795 ²⁾	500	1,50 / 2,50	1,15 / 2,05	1,20 / 1,95	17
140 009	D-503	500	1,76 / 3,00	1,45 / 2,63	1,43 / 2,39	20
140 008	D-1000	1.000	1,78 / 3,00	1,38 / 2,54	1,65 / 2,35	27
140 014	D-1004	1.000	2,25 / 4,00	1,86 / 3,44	1,79 / 3,07	36

²⁾ Permitted for man riding applications up to 150 kg according to EN 795. Equipped with rubber plates and safety chain.

¹⁾ Max. spreading angle (25°)

Suitable man riding rope lifting and lowering equipment available.

ALUMINIUM TRIPOD WITH WINCH



DW-200



DW-1040

- Light aluminium construction with built-in rope winch
- Simple transport due to telescopic height adjustment
- Spikes as standard

Accessories:

- Rubber plates (for solid ground)
- Safety chain (for smooth ground)

All models are equipped with rope winch, crank, rope and swivelling load hook.

For rapid winding/unwinding of the unloaded load the winches are equipped with a direct drum drive and a load drive (except model DW-200). The crank can be removed even in a loaded condition (except model DW-200).

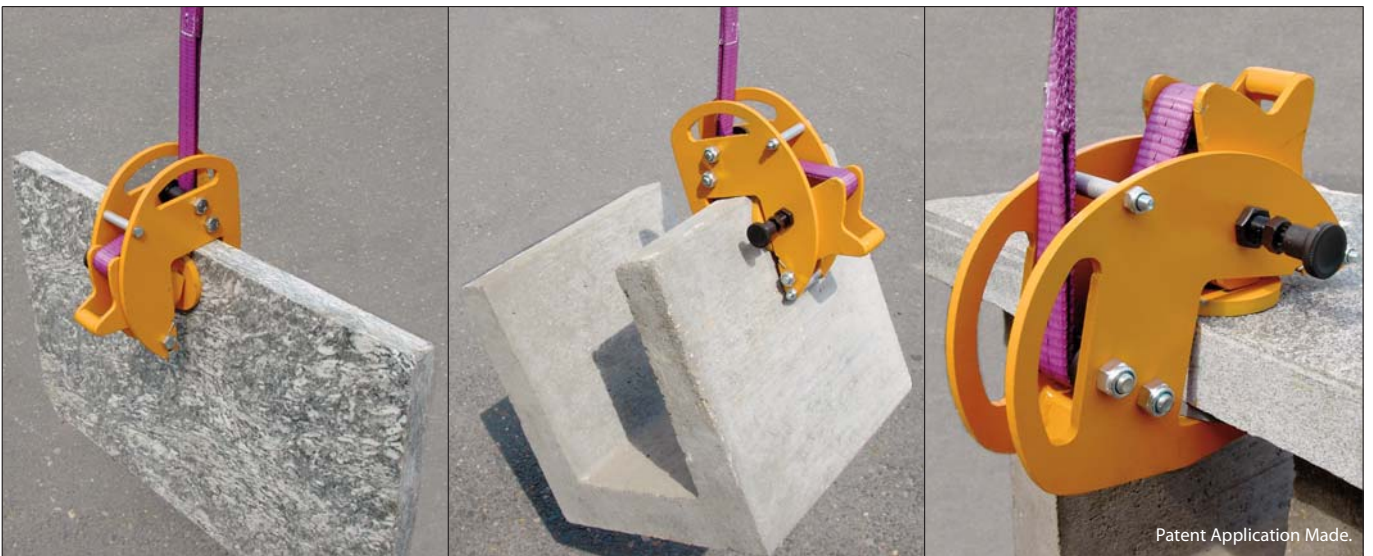
Special designs made of steel tube on request.

Order No.	Model	Carrying Capacity kg	Length Of Support L Min./Max. m	Clearance Height ¹⁾ H Min./Max. m	Total Lifting Height m	Spreading Angle ¹⁾ B Min./Max. m	Rope Lines	Weight Approx. kg
144 200	DW-200	200	1,18 / 1,88	0,94 / 1,58	5,00	0,95 / 1,50	1	20
144 500	DW-500	500	2,10 / 2,50	1,70 / 2,10	5,00	1,50 / 2,00	1	35
144 503	DW-530	500	2,40 / 3,00	2,00 / 2,50	7,00	1,90 / 2,50	1	45
144 577	DW-1000	1.000	2,40 / 3,00	1,90 / 2,40	7,00	1,90 / 2,50	2	45
144 504	DW-1040 ²⁾	1.000	2,85 / 4,00	2,40 / 3,40	7,00	2,20 / 3,00	2	69

¹⁾ Max. spreading angle (25°)

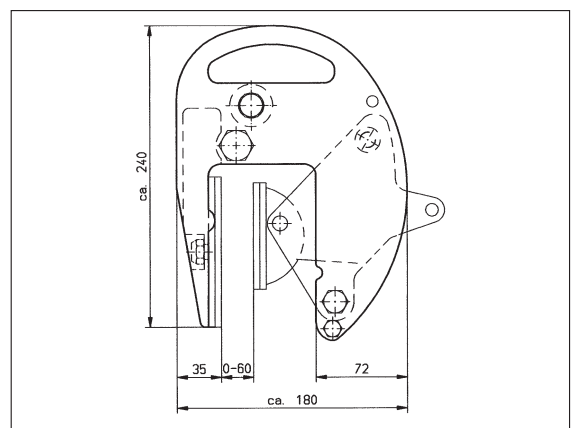
²⁾ For static reasons the upper part of the support with winch is made of galvanised steel.

FLAT CLAMP



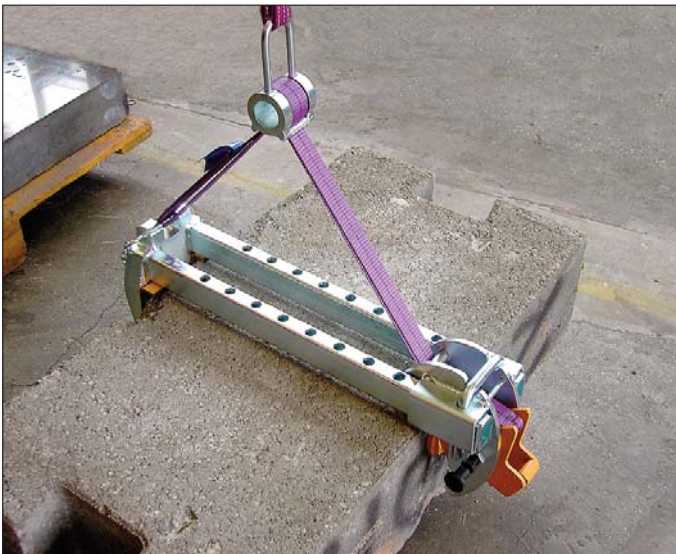
The clamp with the huge multiplication of 5:1 for the safe transport of plates.

- ❑ **Great safety** due to huge multiplication of 5:1.
- ❑ **Web sling** instead of chain/rope: low weight, no twisting, no injuries.
- ❑ The **narrow jaw** enables the putting down of upright plates or the erection of plates. Even tightly positioned upright plates can be gripped.
- ❑ No damage to the plate surface due to **rubber coating**.
- ❑ **Spring tension** prevents an inadvertent slipping down of the clamp.
- ❑ **Easy handling** by compact and convenient construction.
- ❑ Suitable for nearly **all materials**.



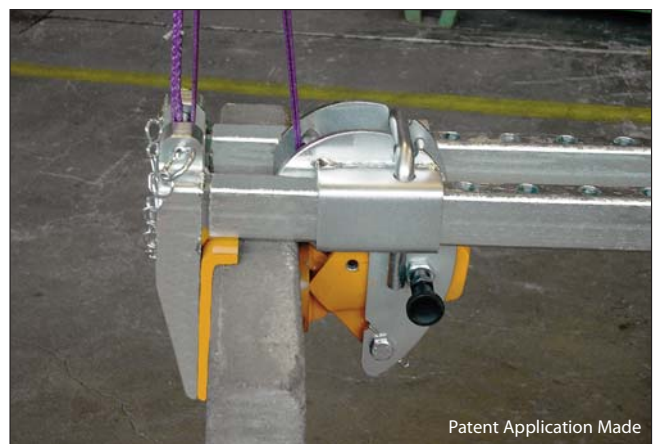
Order No.	Model	Carrying Capacity	Clamping Range	Weight
300 100	FZ 0,8	800 kg	0 - 60 mm	8 kg

BLOCK CLAMP



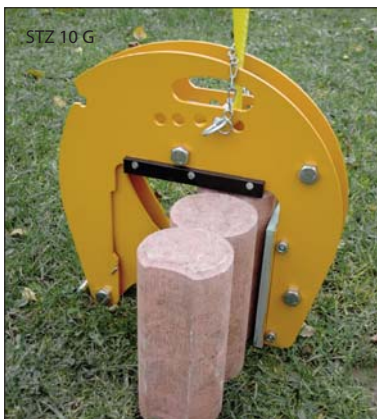
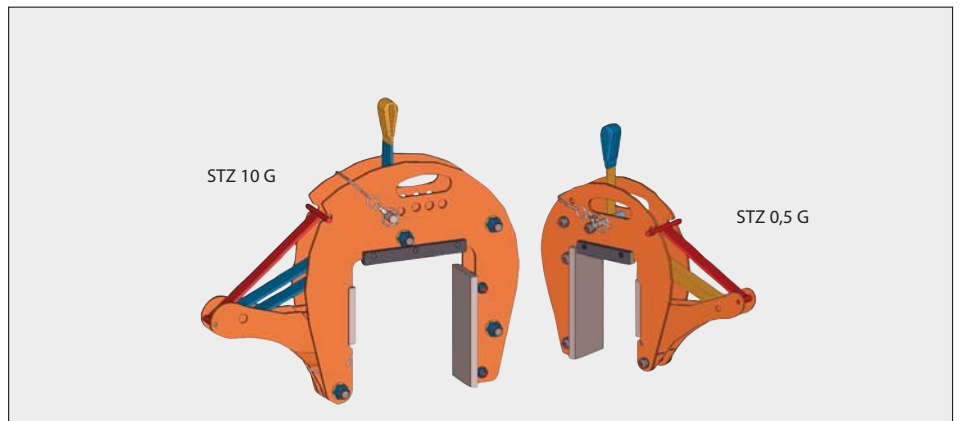
The clamp with the huge multiplication of 5:1 for the safe transport

- ❑ **Great safety** due to huge multiplication of 5:1.
- ❑ **Web sling** instead of chain/rope: light weight, no twisting, no injuries.
- ❑ Due to the **continuously adjustable suspension** also asymmetric elements can be handled in a horizontal position.
- ❑ The **narrow jaw** enables picking up of loads even when in confined spaces.
- ❑ Clamping jaws equipped with **rubber coating**.
- ❑ **Spring tension** prevents an inadvertent slipping down of the clamp.
- ❑ **Easy handling** by compact and convenient construction.
- ❑ Suitable for nearly **all materials**.



Order No.	Model	Carrying Capacity	Clamping Range	Weight
303 050	BZ 0,5-50	500 kg	10 - 500 mm	21 kg

CLAMP FOR UPRIGHT SLABS



- Simple applying and disconnecting by means of holdfast application: clamp must not be lifted manually
- No adjustment of the clamping range
- Huge multiplication guarantees optimum safety
- Web sling instead of chain: light weight
- With spring tension
- Ideal for concrete and natural stones

Order No.	Model	Save Working Load kg	Typ Of Surface Coating	Clamping Range mm	Web Sling Length m	Weight kg
305 010	STZ 0,5	500	Serrated	40 - 120	0,25	8
305 011	STZ 0,5 G	500	Rubber-Lined	30 - 110	0,25	8
305 024	STZ 10	1.000	Serrated	100 - 225	0,25	14
305 025	STZ 10 G	1.000	Rubber-Lined	90 - 215	0,25	14

BORDER STONE LIFTER



LSH 80



LSH 80 with adapter 400



LSH 120

Application Made For Patent

- The ideal lifter for border stones according to DIN 483
- Ergonomic posture when lifting and laying the border stones
- Easy clamping and releasing by turning the handle
- Compact dimensions and low net weight

Order No.	Model	Safe Working Load kg	Contact Surface	Stone Thickness mm	Coating	Weight kg
307 080	LSH 80	80	Rubber-Lined	80	galvanized	2,5
307 080-1	LSH 80	80	Rubber-Lined	60 + 80	galvanized	2,7
307 120	LSH 120	80	Rubber-Lined	60 - 120	galvanized	3,0
307 200	Adapter set for plates 300 / 400 / 500 mm				galvanized	
307 260	Adapter for plates 600 mm				galvanized	

KERB STONE LIFTER

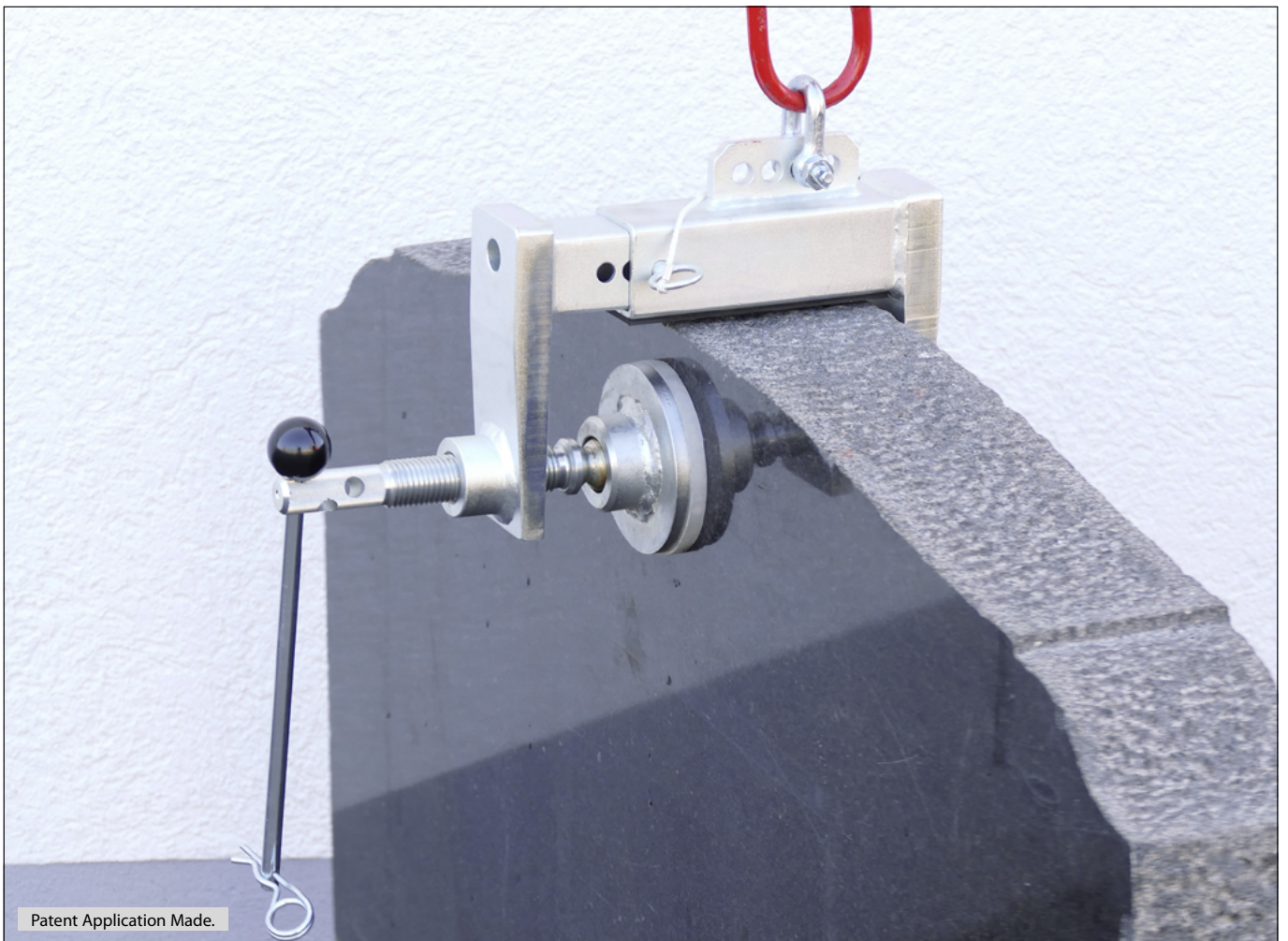


- For manual and machine hoisting operation
- Ideal for high and round kerb stones

- Galvanised construction

Order No.	Model	Carrying Capacity kg	Height of Kerb Stone mm	Width of Kerb Stone mm	Weight kg
308 100	BSH 140	140	max 300	150 / 180 / 200	5
308 102	BSH 140/S	140	max 400	80 - 150	6
308 110	BSH 120	140	max 300	80 - 120	5

SCREW CLAMP



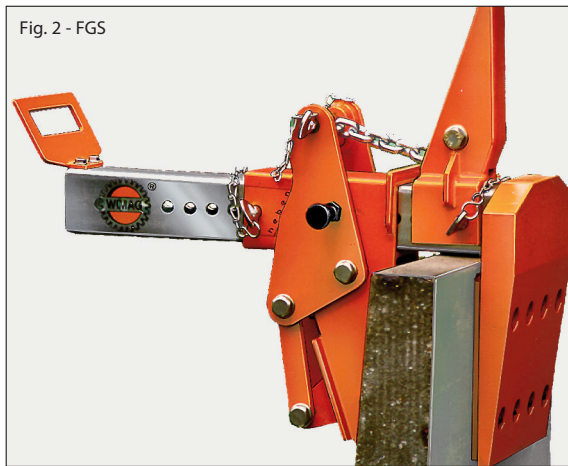
- With rubber coating
- Galvanized construction
- ideal device for the transport and the laying of gravestones

Order Nr.	Model	Safe working load kg	Clamping range mm	Weight kg
309 050	SC 0.5-17	500	60 - 170	12
309 100	SC 1.0-26	1.000	70 - 260	20



- **Safe Transport of Concrete Parts via High Clamping Force**
- **Adjustable Suspension Ring for Balancing the Center of Gravity**

Flat Grab FGS with Adjustable Suspension Ring for the Safe Handling of Concrete Parts.



The Flat Grab FGS was developed for handling rough stones and concrete parts with parallel surfaces.

The high clamping force guarantees safe handling. One clamping jaw is adjustable. The narrow construction of the second clamping jaw is welded to one end of the beam. This narrow construction enables the grasping, tensioning and the safe **upright setting** of horizontally positioned concrete parts. Due to the **adjustable suspension ring**, e.g. L-shaped stones can be put into an upright position.

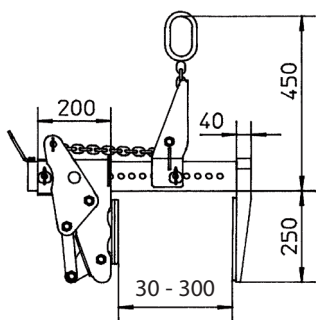
The FGS is equipped **with exchangeable rubber coatings**.



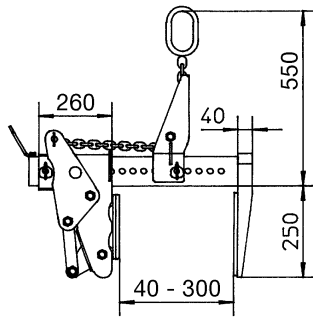
The FGS can be used near to the ground together with any lifting equipment.

For picking up the load, a bolt is pulled which snaps in by itself when the load is put down and the grab **opens automatically**.

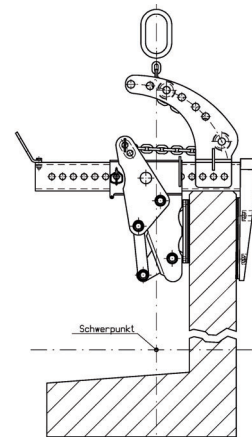
Due to a high-strength chain the FGS has a **low net weight**. The guide handle enables an **exact positioning** of the load. The grab is coloured orange, RAL 2000. The beam and the connecting elements are galvanized. The application has been made for patent.



FGS 1,5-30



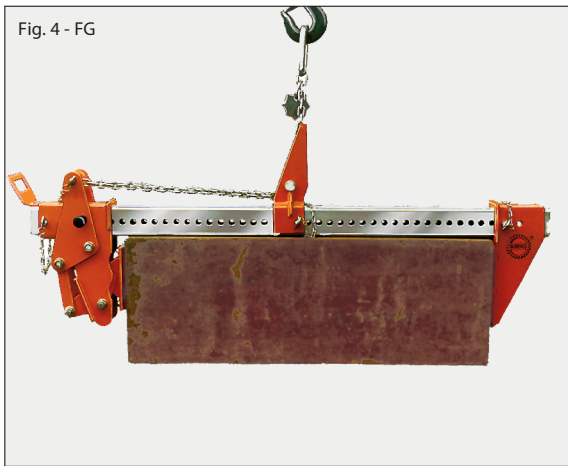
FGS 3-30



FGS with special suspension for L-shaped stones

Order No.	Model	Carrying Capacity	Clamping Range	Weight
315 030	FGS 1,5-30	1.500 kg	30 - 300 mm	47 kg
315 037	FGS 1,5-42	1.500 kg	30 - 420 mm	49 kg
315 035	Special suspension FGS 1,5			
315 994	Automatic FGS 1,5			
315 903	FGS 2,5-80	2.500 kg	40 - 800 mm	95 kg
315 040	FGS 3-30	3.000 kg	40 - 300 mm	81 kg
315 045	Special suspension FGS 3-30			
315 995	Automatic FGS 3			

Flat Grab FG / FGB for the Safe Handling of Wide Loads.



The Flat Grab FG was developed for the handling of rough stones and concrete parts with parallel surfaces.

High clamping force guarantees safe handling.

The complete clamping range of both clamping jaws is adjustable.

Due to the **adjustable suspension ring**, parts with an eccentric center of gravity can also be held in a horizontal position. The FG is equipped with exchangeable rubber coatings.

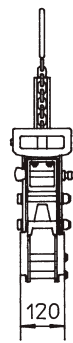
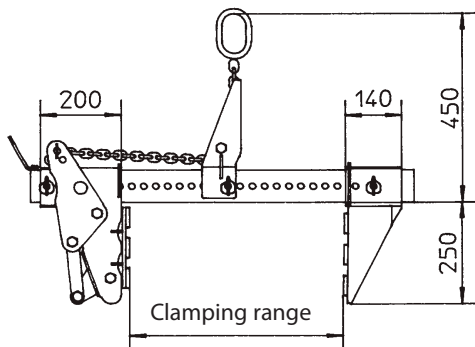
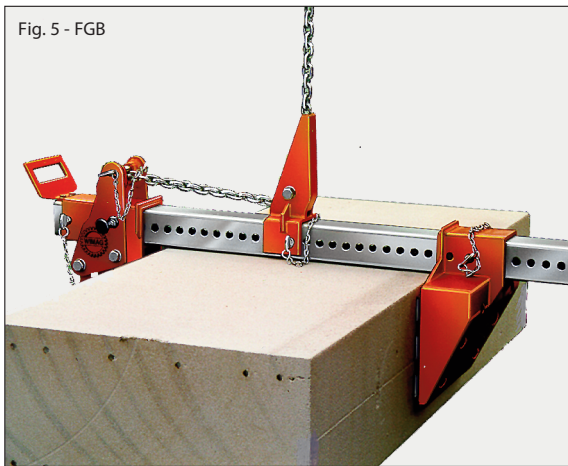
The Flat Grab FG can be used near to the ground with any lifting equipment.

For picking up the load, a bolt is pulled which snaps in by itself when the load is put down and the grab **opens automatically**.

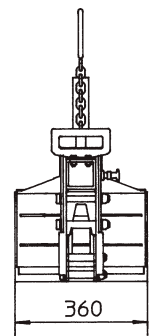
Due to a high-strength chain the FG has a **low net weight**.

The model **FGB** has wide clamping jaws and is used for handling delicate parts.

The grab is coloured orange, RAL 2000. The beam and the connecting elements are galvanized.



FG



FGB

Order No.	Model	Carrying Capacity	Clamping Range	Jaw Width	Weight
315 050	FG 1,5-50	1.500 kg	30 - 500 mm	120 mm	40 kg
315 100	FG 1,5-100	1.500 kg	30 - 1.000 mm	120 mm	47 kg
315 150	FGB 1,5-50	1.500 kg	30 - 500 mm	360 mm	54 kg
315 200	FGB 1,5-100	1.500 kg	30 - 1.000 mm	360 mm	60 kg
315 994	Automatic FG/FGB				

Plate Grab for the Safe Handling of Horizontally Positioned Plates

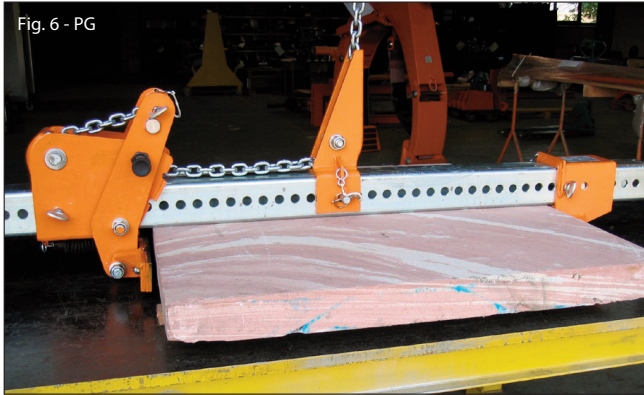
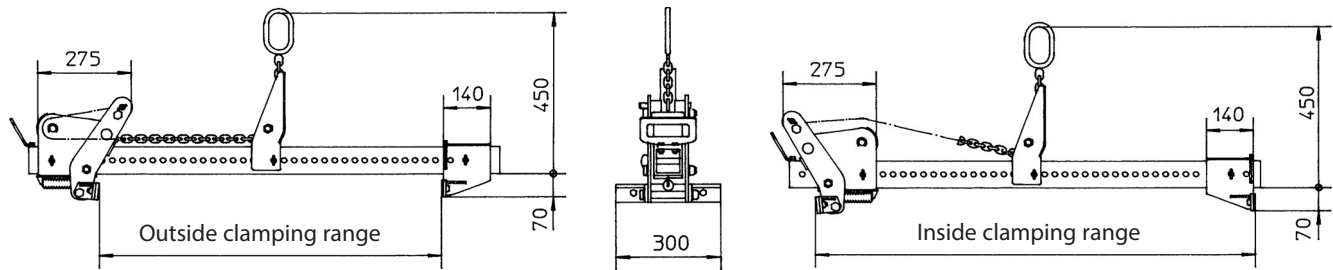


Fig. 6 - PG

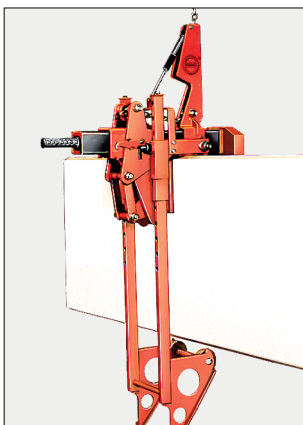
The Plate Grab PG was developed for handling rough plates with parallel surfaces. The high lever transmission guarantees **high clamping force**. By turning the clamping jaws, parts can also be gripped from the inside. The PG is equipped with exchangeable rubber coatings. The equipment is orange in colour, RAL 2000.



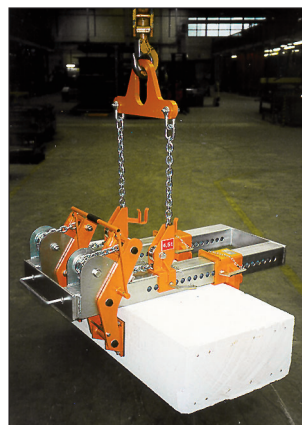
Order No.	Model	Carrying Capacity	Outside Clamping Range	Inside Clamping Range	Weight approx.
315 400	PG 1.5-100	1,500 kg	140 - 1,000 mm	450 - 1,350 mm	44 kg

Special Constructions

The Accident Prevention Regulation VBG 9a "Load-Handling Equipment for Hoisting System Service" requires a protective device for the operation of grabs **near to the ground** to prevent the load or parts of the load from falling down. The following special constructions have already been built:



Flat Grab equipped with a catch hook for the laying of AAC wall panels near to the ground.



Flat Grab FGB-4.5-95 special construction, carrying capacity 4,500 kg clamping range 450-950 mm.

Enquire about our special constructions.

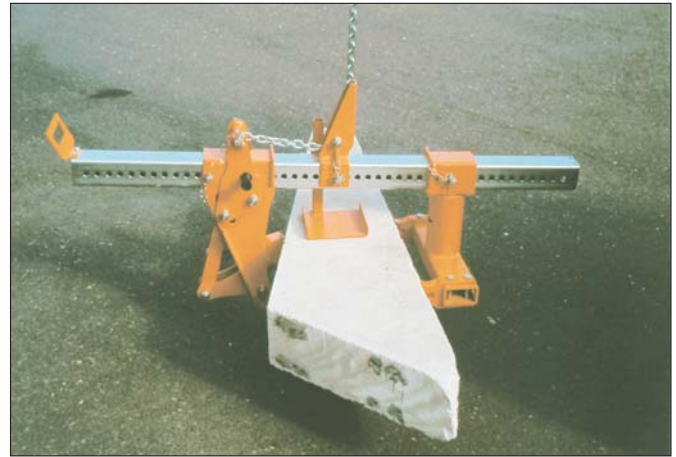
BOULDER GRAB



Boulder grab transporting irregular blocks.

- Large clamping range
- Adjustable suspension ring
- Large rotating range
- Large gripping depth
- Low weight

The ideal grab for heavy, irregular blocks.



The boulder grab was developed for the simple transport of irregular stones and boulders. Of course, elements with parallel sides can also be transported.

The large lever transmission and the rotating clamping jaw guarantee a stable load handling. The roughly profiled clamping jaws ensure a safe gripping. The clamping jaws can be replaced by hardened tips.

The holding down device is adjustable in height.

When handling asymmetrical loads with an eccentric center of gravity the suspension eye can be exactly positioned above the center of gravity. The clamping jaws can be adjusted on both sides via bolts.

The boulder grab can be used with any material handling lifting equipment near to the ground. Remove bolt when picking up the load. When setting down the load the bolt will snap in by itself and the grab opens automatically.

Paint: orange, RAL 2000; beam and joining elements are galvanized.

Application made for patent.

Specification

Clamping range	0 - 920 mm	Total length	approx. 1,500 mm
Rotating range	on both sides approx. 15°	Total width	approx. 470 mm
Gripping depth	approx. 250 mm	Total height	650 mm

Order No.	Model	Carrying Capacity kg	Clamping Range * mm	Weight kg
316 500	STG 1-100	1.000	0 - 920	91
316 502	STG 1,5-100	1.500	0 - 920	96

* for parallel sides

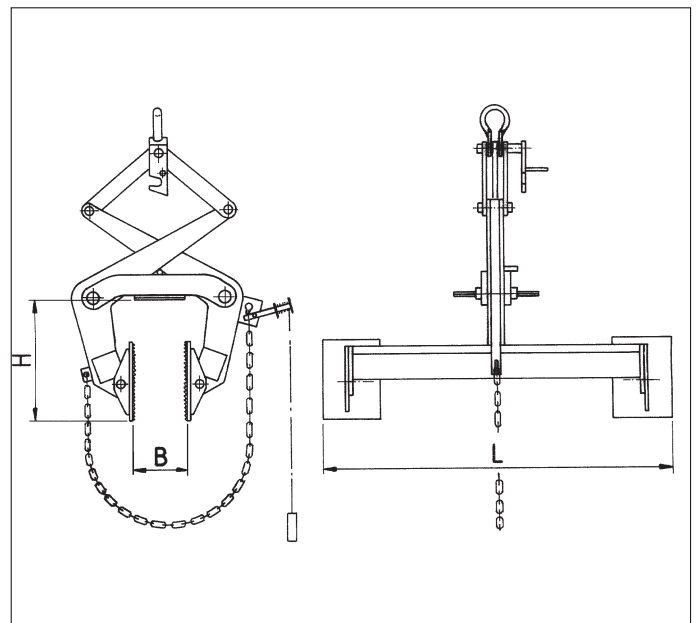
Special designs upon inquiry.

330

WALL PANEL LIFTING GEAR

The galvanized wall panel lifting gear is used for the laying of horizontally positioned AAC wall panels. The profiled clamps ensure a high grip. If the safety chain is applied a transport high above the ground is permitted. The safety chain can be released by a tension rope of 10 m length.

Order No.	Model	Carrying Capacity kg	L mm	Span B mm	H mm	Weight kg
330 010	PIZa 1	675	520	70 - 230	285	43
330 020	PIZa 2	1.000	660	150 - 310	330	50
330 040	PIZa 4	1.400	1.000	150 - 310	330	65

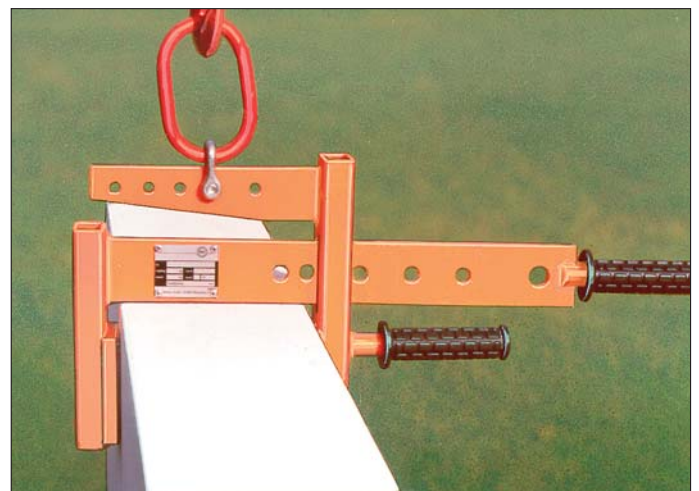


346

JUMBO BLOCK PINCER

The jumbo block pincer is used for the laying of AAC jumbo stones. The steel teeth of the clamps enable a high grip. The working width can be adjusted using the bolt supplied. Cream-coloured varnish, RAL 9001.

Order No.	Model	Carrying Capacity kg	Span cm	Width mm	Weight kg
346 010	JZ 2,5	250	11,5 / 15 / 17,5 / 20 / 25 / 30 / 36,5	50	7



350

FLOOR PANEL LIFTING GEAR

Floor panel lifting gear with safety chain.

This lifting gear is used for the laying of reinforced floor and roof panels with profiled sides.

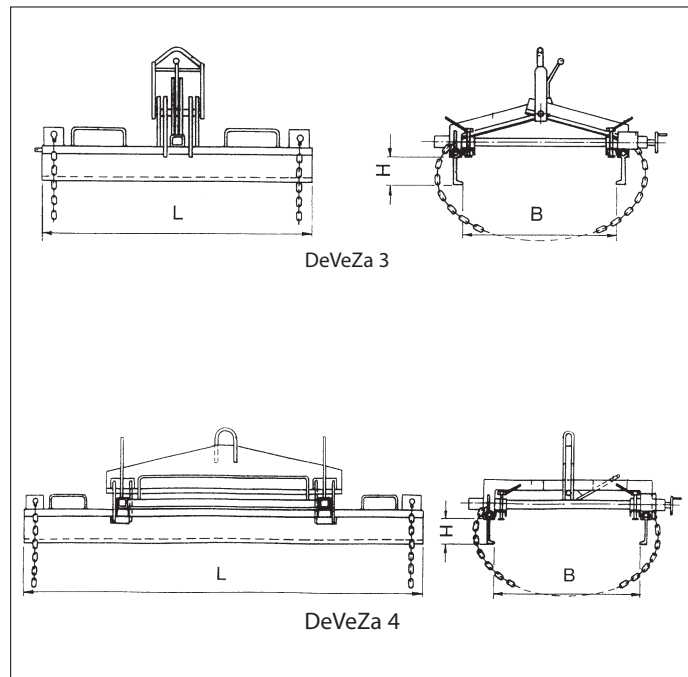
The panels can be laid by one person without any space left in between. Adjustment of the panels is not necessary.

The floor panel lifting gear is delivered with a chain storage and 2 galvanized safety chains which can be continuously fitted. The chains are fixed and as a result cannot be lost.

If the safety chains is applied a transport high above the ground is permitted.

Order No.	Model	Carrying Capacity kg	L* mm	Span mm	H** mm	Weight kg
350 030	DeVeZa 3	800	1.000	250 - 750	100	80
350 040	DeVeZa 4	1.400	2.000	250 - 750	100	150

* L = Construction length / ** H = Profile height (see Fig.)



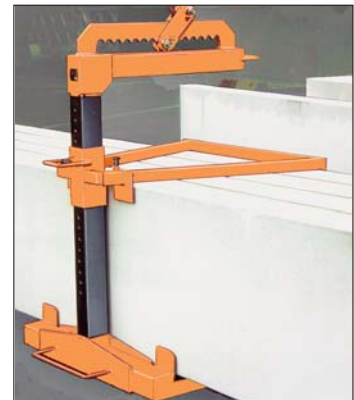
SPECIAL DESIGNS



Floor panel lifting gear with catch hook for the transport high above the ground.



Flat grab FG/U with catch hook for the safe erection of wall panels, to be carried out also high above the ground.



Off loading yoke for panels AbBü 3.4 for the transport of vertically positioned panels and packages.

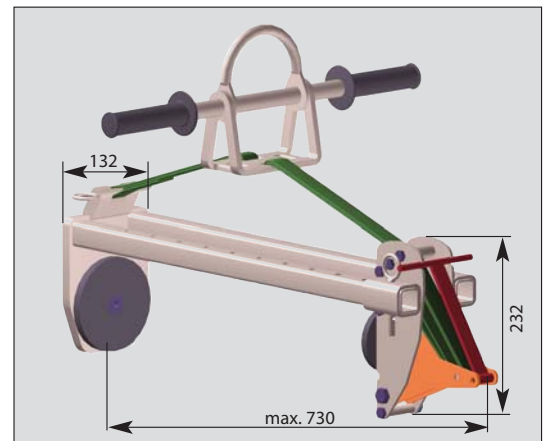
GUTTER STONE CLAMP



- The ideal clamp for gutter stones, block steps, ...
- Equipped with milled tooth strips and handle grips
- Galvanized as standard

Order No.	Model	Safe Working Load kg	Clamping Range mm	Weight kg
355 100	Gutter stone clamp RSZ 1	100	310 / 350 / 500	7

STONE CLAMP



- Ideal for concrete stones and plates
- For manual and machine hoisting operation
- Huge multiplication guarantees great safety
- Web sling instead of chain: light weight
- Continuously adjustable suspension, rotateable horizontally through 90°

- Large clamping range
- Equipped with spring tension
- Clamping jaws equipped with rubber coating
- Galvanized construction

Order No.	Model	Safe Working Load	Clamping Range	Weight
380 050	SZ 0,25-50	250 kg	10 - 500 mm	11 kg
380 100	SZ 0,25-100	250 kg	10 - 1.000 mm	14 kg

STONE LIFTER



SH 40 for kerb stones, stones, boulders

- With rubber coating or tips
- For manual and machine operation near to the ground
- Also suited for curved kerb stones
- Galvanized construction

Order No.	Model	Safe Working Load	Stone Length, Stone Width	Weight
382 040	SH 40	200 kg	0 - 400 mm	9 kg
047 886	Stone tip for SH 40 (3 pieces are needed)			

HOLLOW BLOCK CLAMP



- With rubber coating
- Galvanized construction
- For manual and machine operation near to the ground

Order No.	Model	Safe Working Load kg	Clamping Range mm	Weight kg
383 200	FSZ 0,2	200	150 - 600	7